



Anycubic Photon M3 Plus Assembly Instruction

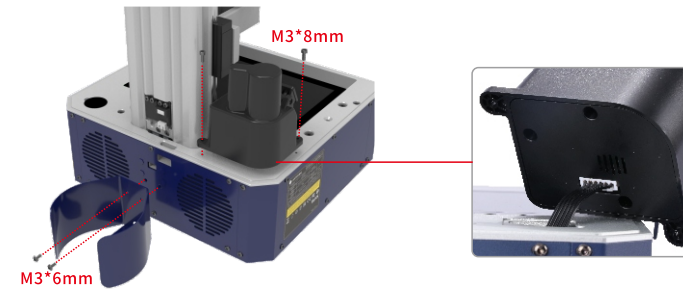
For detailed user instructions and software installation, please refer to user manual in the USB drive or visit www.anycubic.com and download. Thank you for purchasing anycubic products! If you need any help, please contact technical support at support@anycubic.com/en.

1 Assembly and Leveling instructions

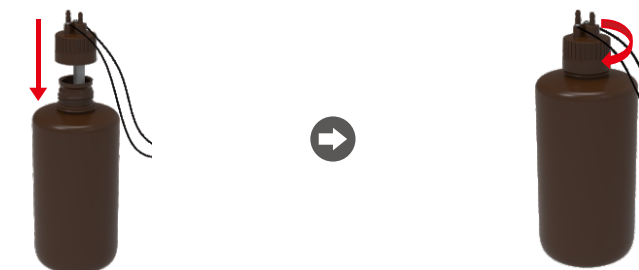
1. Unpack and remove all accessories. Skip to Step 7 if you do not want to install auto-feed unit first.
2. Turn the machine back. Remove the black square cover upon the base and take out the wire below.



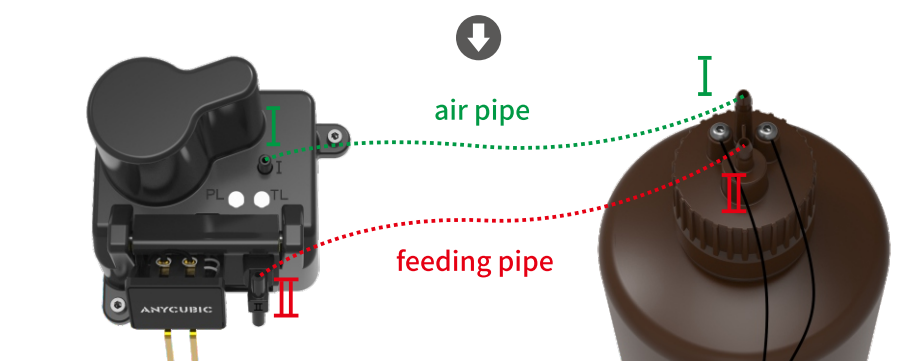
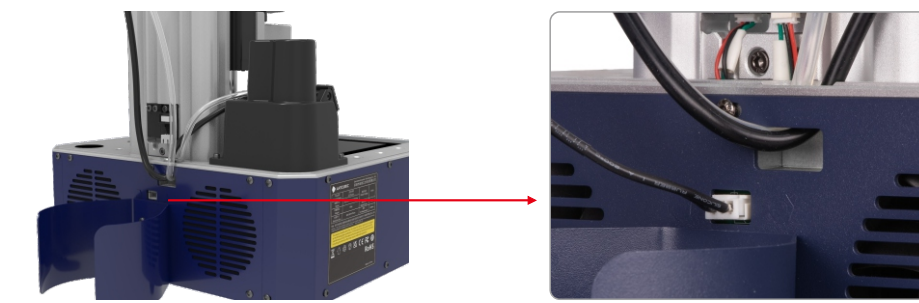
3. Connect the wire to resin sensor, then install the sensor and resin-holding bracket.



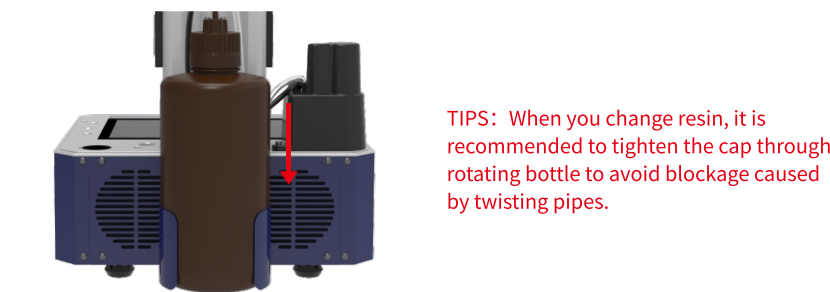
4. Insert the cap part into Anycubic 1kg resin bottle and tighten it.



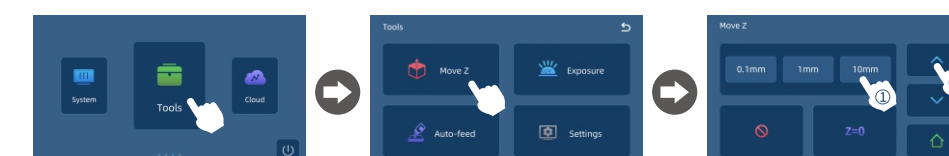
5. Pass two pipes through the limit hole on the back of the machine from the bottom up. **Connect ports II with feeding pipe (black) and connect ports I with air pipe (transparent).** Please completely follow this way of connection to avoid the damage of auto-feed unit. Then, connect the cap part wire to machine.



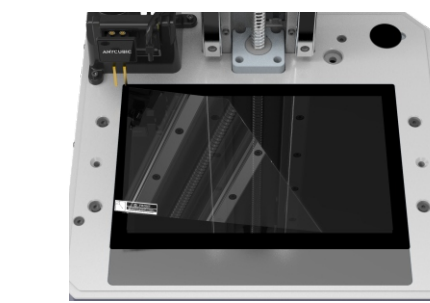
6. Place resin bottle on the bracket.



7. Turn the machine back to the front. Then plug in power and turn on the machine.
8. Rise the Z axis to a certain height to ensure that the curing screen will not be scratched when the printing platform is installed.



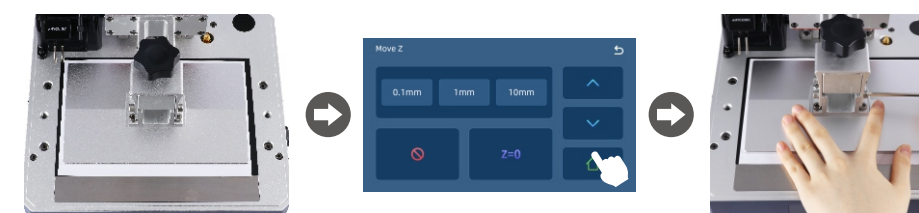
9. Tear off the protective film before leveling and printing.



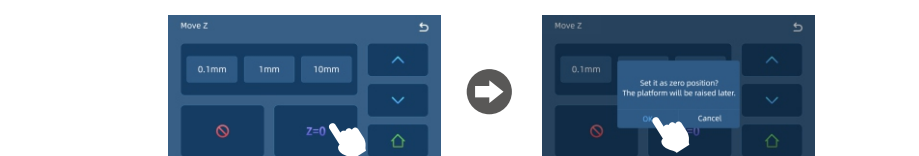
11. Install and secure the printing platform.



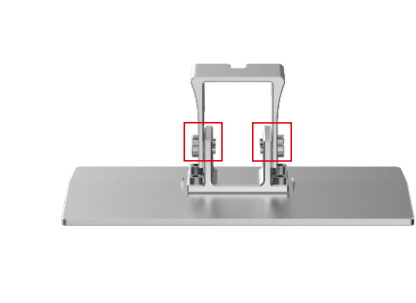
12. Place the leveling paper on the curing screen. Then click [] on the touch screen. Wait for Z axis to descend and then it will stop automatically. Press on top of the platform gently, and then tighten the four screws to secure the platform.



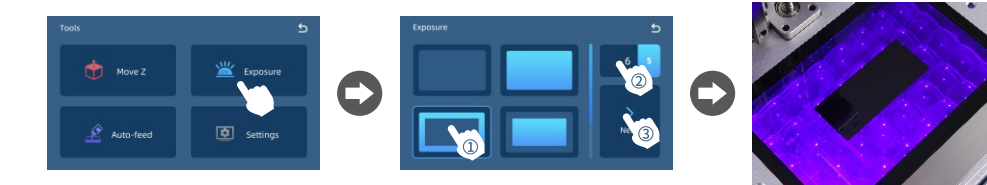
13. Lastly, click "Z=0" and confirm to save the zero position. Click "Enter", the printing platform will automatically lift up. Then, take out the paper.



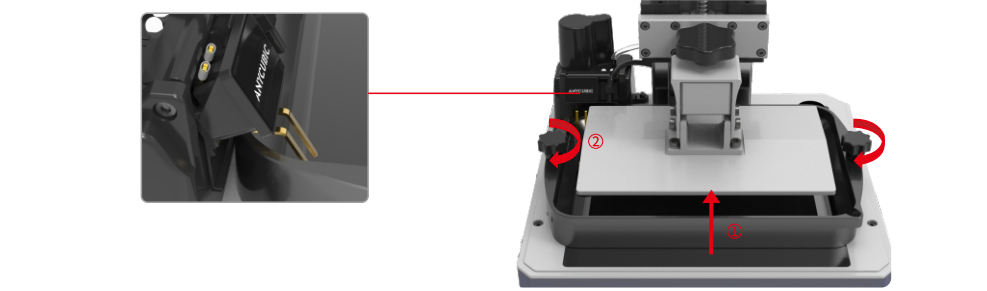
10. Loosen the four screws on the printing platform.



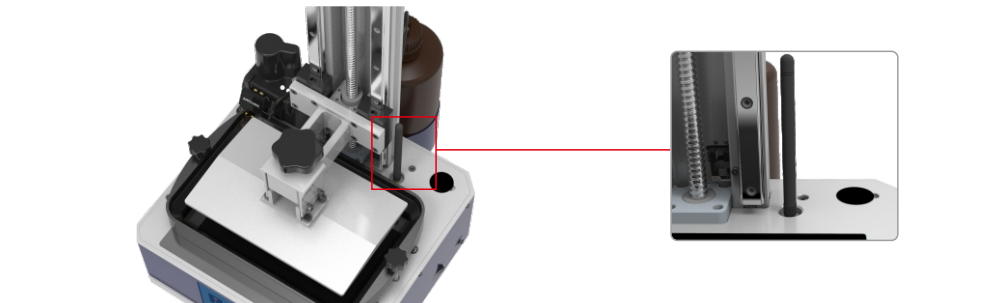
14. Exposure test: Raise printing platform until the curing screen can be observed completely. Return to Tools menu and click "Exposure". Select an image, set the test time and then click "Next". The corresponding image should be displayed completely on curing screen.



15. Install resin vat with both needles being set in it.



16. Install WIFI antenna.

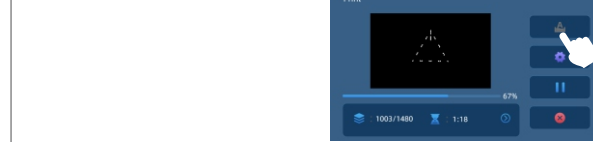


2 Auto-feed

Ensure the auto-feed unit has been installed and the resin in bottle is enough to print. The function is for supplement only, please pour resin into resin vat before printing. Click "Tools" → "Auto-feed" → "Feed in". It will feed in automatically if resin in the vat is insufficient during printing. Click "feeding speed" to set the speed. **Auto-feed only works when machine is printing, and the unit feeds every five minutes normally.**



If the insufficiency of the resin in bottle is detected when it is printing, the machine will beep to warn and disable auto-feed function. Please add or change resin first and click auto-feed button to enable it if necessary.

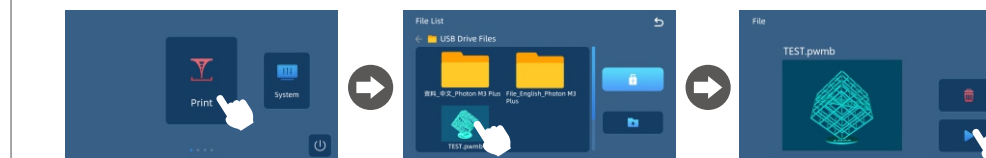


Notice:

1. If you use non-Anycubic resin, it is suggested to check whether red light goes out normally when resin reaches both needles before printing. If not, the resin cannot be automatically fed.
2. To save resin, pour the remaining resin that is out of the reach of pipes to resin vat.
3. **DO NOT vigorously shake or turn over the resin bottle when cap part is installed. If the inside of cap is stained by resin, please immediately clean it to avoid malfunction or damage of auto-feed unit.**

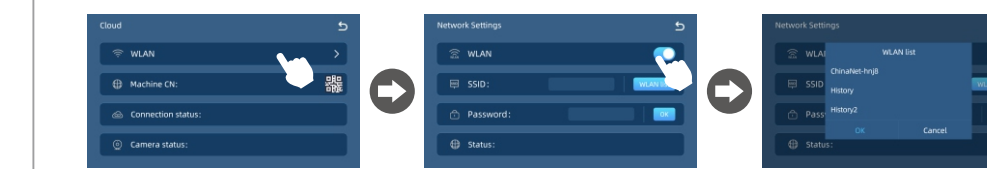
3 Printing

1. Please check FEP film carefully before and after every printing. If the FEP film is broken, replace it immediately to avoid further damage to machine.
2. Make sure you wear masks and gloves (avoid direct skin contact with resin), slowly pour resin into the vat and be careful not to exceed the vat's maximum scale.
3. Put on the cover. (Pay attention to the direction of cover. The sticker **Sticker should be at the rear.**)
4. Insert the USB memory to the machine, then click "Print" to choose a file to print. Or connect the machine to Anycubic Cloud and print the file through remote control. (see the next part.)



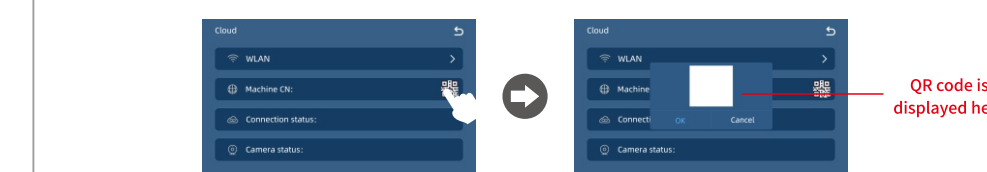
4 Anycubic Cloud

1. Connect Photon M3 Plus to Anycubic Cloud to upload and manage printing over WIFI and Ethernet.
 - Connect with Ethernet: Plug one end of the network cable into the network port.
 - Connect with WIFI: Install the antenna first. Click "Cloud" → "WLAN", turn on to search for available network and select one. Then, enter the password and click OK to connect.



2. To download the application, search "Anycubic Cloud" in App Store or Google Play. Then, sign up and log in.

3. Open Anycubic Cloud - workbench - 3D printers, click "Add Printers". Open Cloud interface on the printer, check Machine CN and enter it to "Add Printers" interface in Anycubic Cloud; or click "QR" icon and then scan QR code with your smart phone. Lastly, confirm to add printers.



4. When printer is added successfully, you can control printing remotely. If necessary, you can install an extra camera unit to monitor printing in real time.

5 Resin recycling

After printing, there might be some cured resin left in the vat. Please filter the remaining resin with a funnel and then store the liquid in a sealed container. For the residues left in the vat or on the platform, please use paper towel to carefully wipe off.



6 Attention

- 1) Do not tear off the sticker on the back of the cover.
- 2) Keep the ANYCUBIC 3D printer and its accessories out of the reach of children.
- 3) ANYCUBIC 3D printer must not be exposed to water or rain.
- 4) Do not disassemble ANYCUBIC 3D printer, please contact technical support if you have any question.
- 5) In case of emergency, please immediately cut off the power of ANYCUBIC 3D printer and contact the technical support.

7 Radio interference

WARNING: This device complies with Part 15 of the FCC Rules. Operation is subject to the following two conditions:
(1) This device may not cause harmful interference, and (2) This device must accept any interference received, including interference that may cause undesired operation.

CAUTION: Changes or modifications not expressly approved by the party responsible for compliance could void the user's authority to operate the equipment.

NOTE: This equipment has been tested and found to comply with the limits for a Class B digital device, pursuant to Part 15 of the FCC Rules. These limits are designed to provide reasonable protection against harmful interference in a residential installation. This equipment generates, uses, and can radiate radio frequency energy and, if not installed and used in accordance with the instructions, may cause harmful interference to radio communications. However, there is no guarantee that interference will not occur in a particular installation. If this equipment does cause harmful interference to radio or television reception, which can be determined by turning the equipment off and on, the user is encouraged to try to correct the interference by one more of the following measures:

- Reorient or relocate the receiving antenna.
- Increase the distance between the equipment and receiver.
- Connect the equipment into an outlet on a circuit different from that to which the receiver is connected.
- Consult the dealer or an experienced radio/TV technician for help.

UK REP
Name: APEX CE SPECIALISTS LIMITED
Add: 89 Princess Street, Manchester, M1 4HT, UK
Contact: Wells
Tel: + 441616371080
E-mail: info@apex-ce.com

EC REP
Name: Pegasus Trading GmbH
Add: Sperberweg 4G Neuss NRW 41468 Germany
Contact: Wells
Tel: 004916098658323
E-mail: info@apex-ce.com

