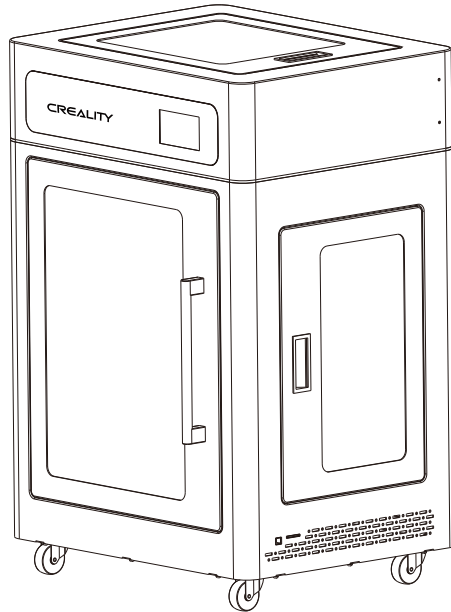


# CREALITY

## 3D Printer User Manual

3D打印机使用说明书

CR-3040 Pro



V1.0

# Content 目录

Dear Consumers,  
Thank you for choosing our products. For the best experience, please read the instructions before operating the Printer. Our teams will always be ready to render you the best services. Please contact us by the phone number or e-mail address provided at the end when you encounter any problem with the Printer.

For a better experience in using our product, you can also learn how to use the Printer in the following ways:  
Visit our official website [www.creality.com](http://www.creality.com) to find relevant software/hardware information, contact details and operation and maintenance instructions.

尊敬的创想三维用户：

感谢您选择、使用创想三维的产品。为了您使用方便，请您在使用之前仔细阅读该说明书，并严格按照说明书的指示进行操作。

创想三维团队时刻准备为您提供优质的服务。在使用过程中无论遇到什么问题，请按照说明书结尾所提供的电话、邮箱与我们进行联系。

为了您能够更好地体验我们的产品，您还可以从以下方式获取设备操作知识：创想三维官网：[www.cxsw3d.com](http://www.cxsw3d.com) 您可以登陆创想三维官网寻找相关软硬件、联系方式、设备操作、设备保养等信息。

## A

### Notes

使用须知

## B

### Equipment Introduction

设备简介

## C

### Use A 3D Printer

使用3D打印机

### Wire Connection

电路接线

### Trouble Shooting

故障检修

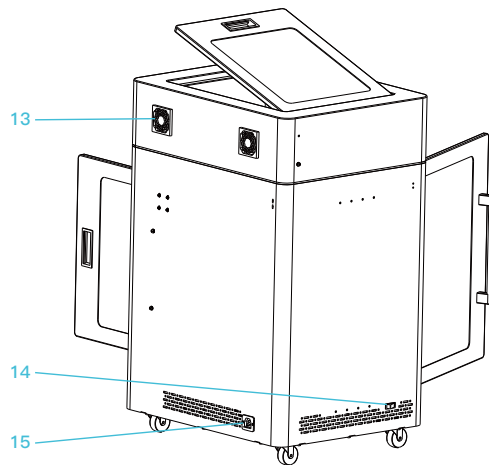
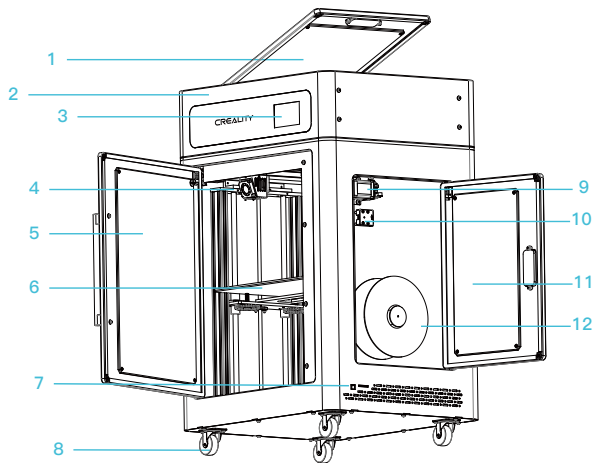
## NOTES 使用须知

1. Do not use the printer in the way which are not described herein to avoid person injury or property damage.
2. Do not place the printer near any heat source or flammable or explosive objects. We suggest placing it in a well-ventilated, low-dust environment.
3. Do not expose the printer to violent vibration or any unstable environment, as this may cause poor print quality.
4. Do not use any other power cable except the one supplied. Do use a grounded three-prong power outlet.
5. Please do not open the plastic cover during usage, otherwise the printing will be interrupted.
6. Do not wear cotton gloves when operating the printer. Such cloths may become tangled in the printers moving parts leading to burns, possible bodily injury, or printer damage.
7. There is the residual temperature of nozzle after printing, timely clean up filaments on the nozzle with other tools. Do not touch the nozzle to prevent scalding.
8. Clean the printer frequently. Always turn the power off when cleaning, and wipe with a dry cloth to remove dust, adhered printing plastics or any other material off the frame, guide rails, or wheels. Use glass cleaner or isopropyl alcohol to clean the print surface.
9. Children under 10 years should not use the printer without supervision.
10. Tips: Do not plug or unplug the power cord when power on.

1. 请勿尝试任何使用说明中没有描述的方法来使用本机，避免造成的意外人身伤害和财产损失；
2. 请勿将本机放置在易燃易爆物品或高热源附近，请将本机放置在通风、阴凉、少尘的环境内；
3. 请勿将打印机放置在振动较大或者其他不稳定的环境内，机器晃动会影响打印机打印质量；
4. 请勿在安装过程中使用其他产品电源线代替，请使用本机附带的电源线，电源插头需接插在带有地线的三孔插座；
5. 请勿在打印机工作时打开打印机面盖，以免影响打印；
6. 请勿在操作打印机时戴棉手套，以防可动部件对人身部件造成卷入挤压和切割伤害；
7. 在打印完毕后及时利用喷头的余温借助工具将喷头上的耗材清理干净，清理时请勿直接用手触摸喷头，以防出现烫伤；
8. 常做产品维护，定期在断电的情况下，用干布对打印机做机身清洁，拭去灰尘和粘结的打印材料、导轨上的异物；
9. 年龄在10岁以下的儿童，请勿在没有人员监督的情况下使用本机，以免造成人身伤害。
10. 温馨提示：请勿带电插拔电线。

# Equipment Introduction

设备简介



1 Top door  
上门

2 Top cover  
上盖

3 Touch screen  
触摸屏

4 Nozzle kit  
喷头套件

5 Front door  
前门

6 Hotbed plate  
热床板

7 Storage card slot and USB port  
存储卡卡槽及USB接口

8 Universal wheel  
万向轮

9 Extruder  
挤出机

10 Filament sensor  
断料检测模块

11 Right door  
右门

12 Filament holder and trays  
料架及料盘

13 Air filtration system  
空气过滤系统

14 Power switch  
电源开关

15 Power port  
电源接口

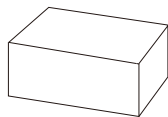
# Equipment Parameters

## 设备参数

Basic Parameters 基本参数	
Model   型号	CR-3040 Pro
Molding size   成型尺寸	300*300*400mm
Molding technology   成型技术	FDM
Number of nozzle   喷头数量	1
Nozzle diameter   喷嘴直径	0.4mm
Precision   精度	±0.1mm
Filament   打印材料	Φ1.75mm PLA/ABS
File format   支持格式	STL/OBJ/AMF
File transfer   打印方式	Storage card/USB   存储卡脱机打印或联机打印
Slicing software   可兼容切片软件	3D Creator Slicer, Repetier-Host, Cura, Simplify3D   创想三维切片软件、Repetier-Host、Cura、Simplify3D
Power specification   电源规格	Input   输入: AC 100-240V 50/60Hz Output   输出: DC 24V
Total power   总功率	500W
Hotbed temperature   热床温度	≤110°C
Nozzle temperature   喷嘴温度	≤280°C
Filament sensor   断料检测	Yes   有
Dual Z-axis screw rod   双Z轴丝杆	Yes   有
Language   语言	Chinese/English   中英切换
Computer operating system   电脑操作系统	Windows XP/Vista/7/8/10/MAC/Linux
Print speed   打印速度	≤180mm/s, 30-60mm / s normally   ≤180mm/s, 正常为30-60mm/s

# Spare Parts

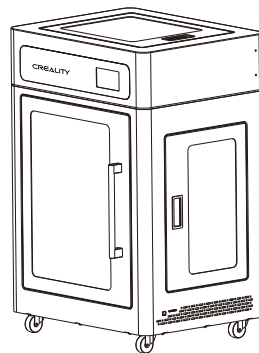
## 零部件清单



1 Tool Kit | 工具包 x 1



2 Filament | 耗材 x 1



3 3D printer | 3D打印机 x 1

### Tool list 工具包清单



4 Wrench and screwdriver x 1 扳手和螺丝刀



5 Needle x 1 通针



6 Solid glue x 2 固体胶



7 USB cable x 1 USB线



8 Sleeve x 1 套筒



9 Tweezers x 1 镊子



10 Power cord x 1 电源线



11 Storage card and card reader x 1 存储卡和读卡器



12 Spade x 1 铲刀



13 Grease x 1 润滑膏



14 Teflon tube x 1 铁氟龙管



15 Utility knife x 1 美工刀



16 Diagonal Pliers x 1 剪钳



17 Spare parts x 1 备品



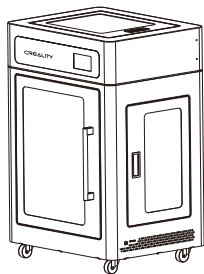
18 Cross Screwdriver x 1 十字螺丝刀

Tips: the above accessories are for reference only, please refer to the physical accessories! 注意: 以上配件仅供参考, 请以实物为准!

# 1

## Start the 3D Printer 启动3D打印机

Turn the power switch to the I position to start the equipment. 将电源开关拨至I档，即启动设备。



3 3D printer | 打印机 x 1

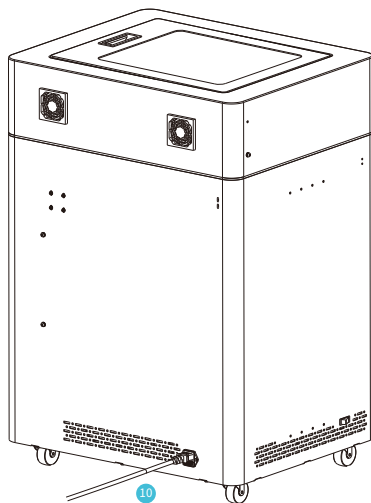


10 Power cord | 电源线 x 1



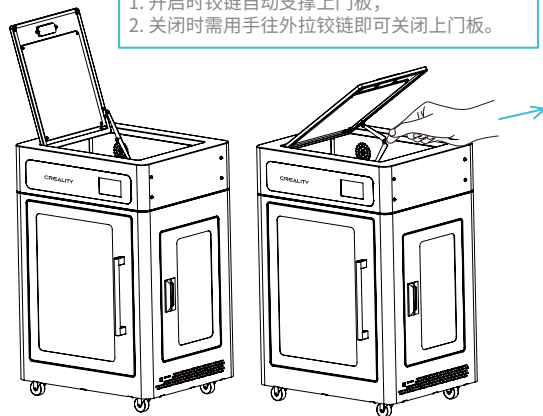
### Caution

- Do not connect or disconnect the cables when the machine is powered on.
- 当机器通电时，请勿连接或断开连接线。



1. The hinge automatically supports the door panel when opening;
2. Hold the door panel and move the hinge outward to close it.

1. 开启时铰链自动支撑上门板；
2. 关闭时需用手往外拉铰链即可关闭上门板。



# 2

## Preheat

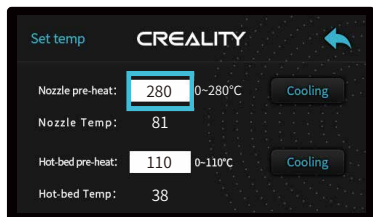
预热

Method 1、



Note: The UI information is only for reference, the actual UI may be different.

Method 2、





# 3

## Preheat

预热

方法1、



注意：界面仅供参考，实际以机器UI为准。

方法2、



## 4

**Load Filament** 装料

When you wait for the temperature to rise, hang the filament over the Filament Holder.

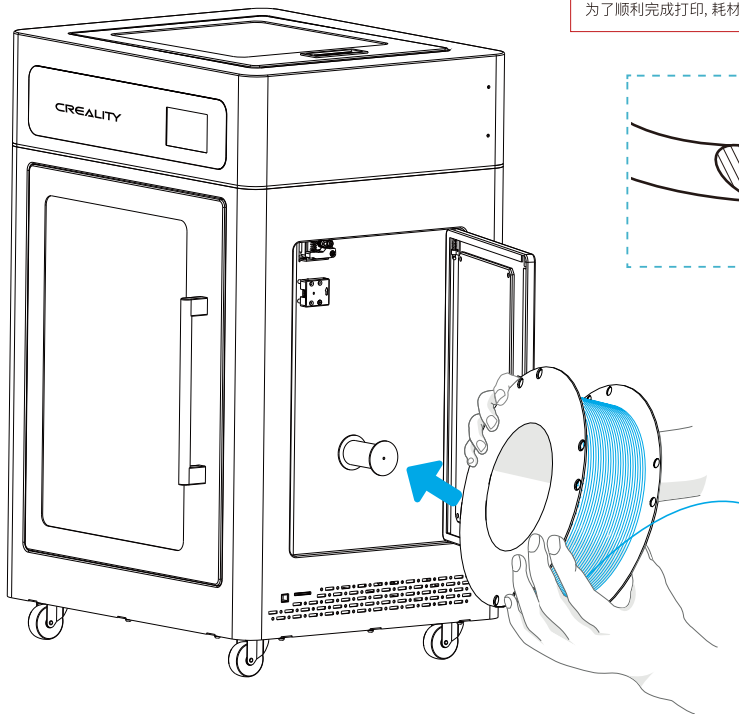
当您等待温度上升时,把耗材挂在料架上。



2 Filament | 耗材 x 1

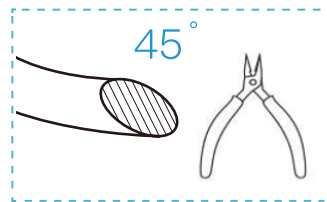


16 Diagonal Pliers x 1  
剪钳



For smoother printing, the end of the filament should be placed as shown below.

为了顺利完成打印,耗材的末端位置应如图所示。

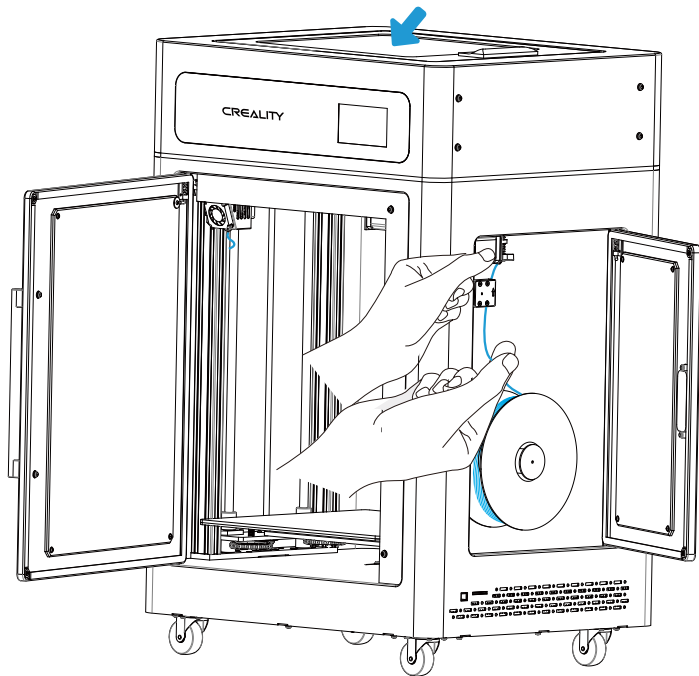


# 5

## Load Filament 装料

When the temperature hits the target temperature, feed in the filaments to the nozzle and keep awaiting until you see liquid filament coming out of the nozzle.

当前温度达到目标温度时,将耗材插入挤出机小孔直至喷嘴位置,等看到喷嘴处有耗材流出即表示耗材已经装载完成。

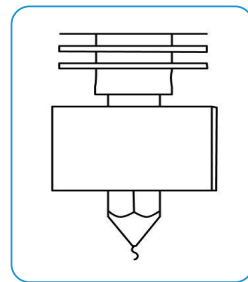


Tips: How to replace the filament?

1. Cut filament near the Extruder and slowly feed in the new filament to the material tube.
2. After preheating the nozzle, push the filament a little forward and quickly withdraw the filament, and then feed in the new filament.

Tips: 如何更换耗材?

- 方法一、在靠近挤出机处将耗材剪断,将新耗材缓缓送入,直到耗材被送入导料管为止。  
方法二、预热喷嘴后,将耗材往前推进一下后,迅速抽出耗材,将新耗材送入。



## 6

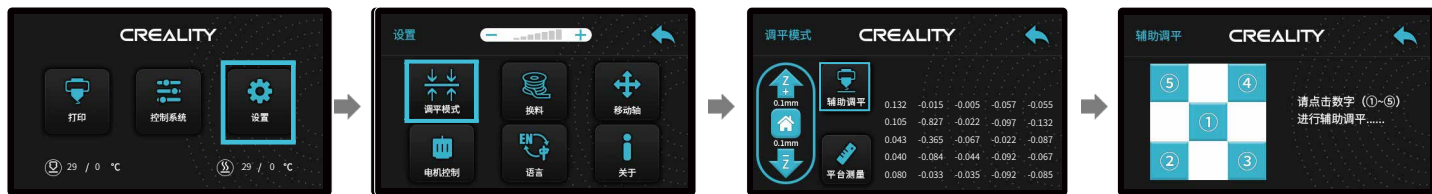
## Level the Platform

调平平台

1. Slightly tighten the four leveling nuts at the bottom of the platform before the first leveling.
2. Select "Settings" → "Level mode", click on the number ①-⑤.



- 1、在初始调平时，稍微拧紧平台底部的四个调平螺母。
- 2、设置“调平模式”，点击数字①-⑤。

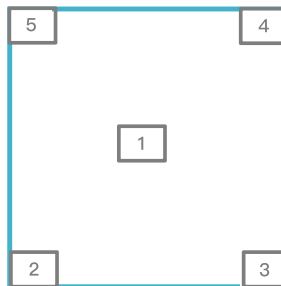
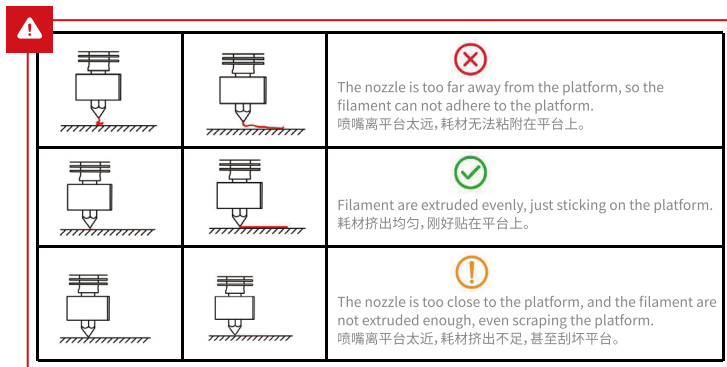
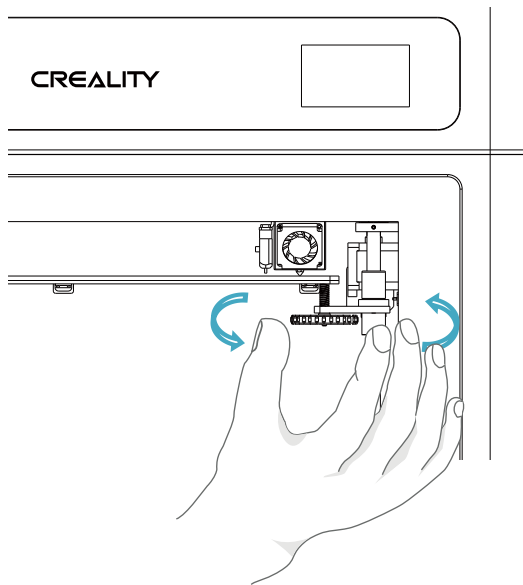


Notes: The UI information is only for reference, the actual UI may be different.  
注意：界面仅供参考，实际以UI为准。

7

Move the nozzle near the top of the leveling screw, twist the screw left or right to adjust the distance between the nozzle and the platform. The distance is as thick as a piece of A4 paper. Level the four corners of platform in order, click ① to check whether the gap between the nozzle and the platform is proper or not.

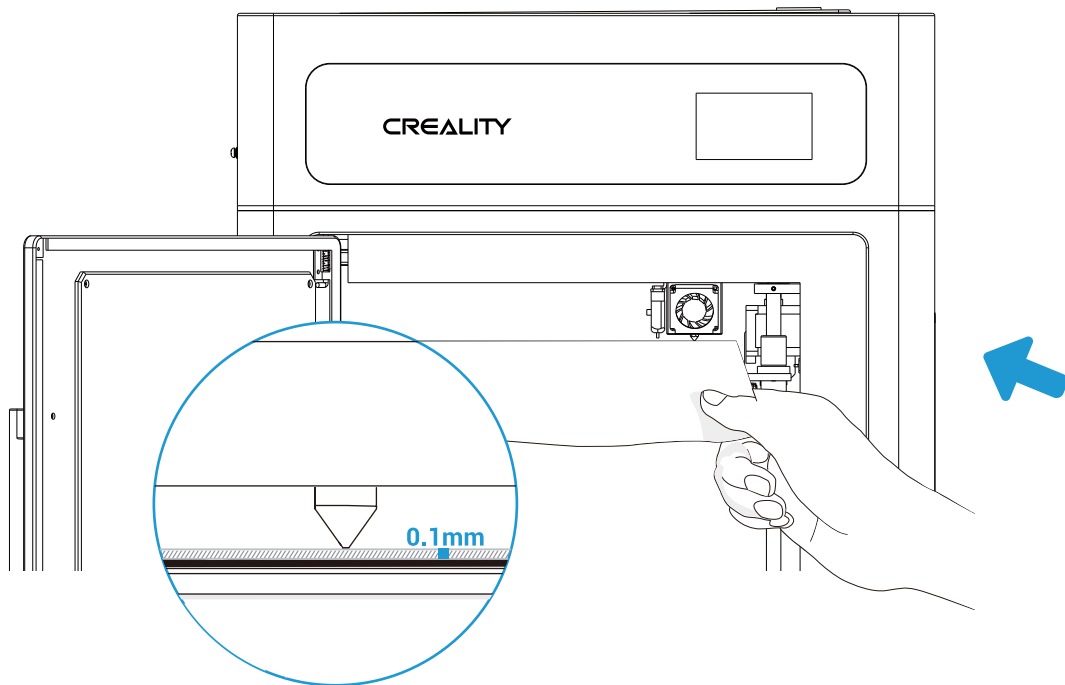
移动喷嘴至螺丝上方附近。拧动螺丝，调节打印平台喷嘴使二者处于刚好贴合状态，间距约为0.1mm（一张A4纸的厚度）。按顺序调平四个角，点击①号，测试平台中间间隙是否合适。



8

Use a piece of A4 paper (standard printer paper) to assist with the adjustment, making sure that the nozzle lightly scratches the paper. Complete the adjustment of the screw on all 4 corners. Repeat above steps 1-2 times if necessary. Keep adjusting until there is slight resistance on the A4 paper from the nozzle.

我们可以利用一张A4纸辅助调平，使喷嘴刚好能在A4纸上产生划痕。依次完成四个边上调平螺丝的调节。不断调整直到在拉动A4纸时能感受到来自喷嘴的轻微阻力。



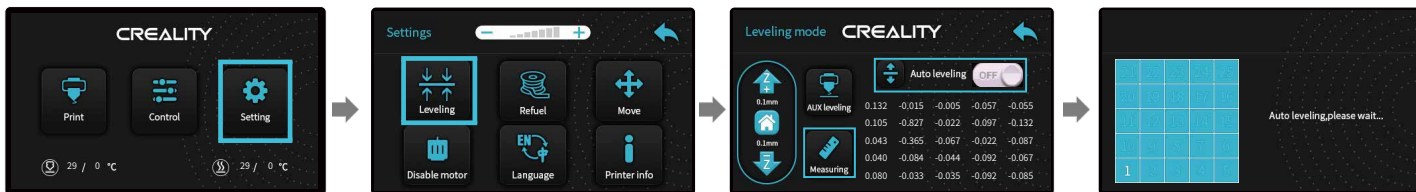
## 9

## Level the Platform

调平平台

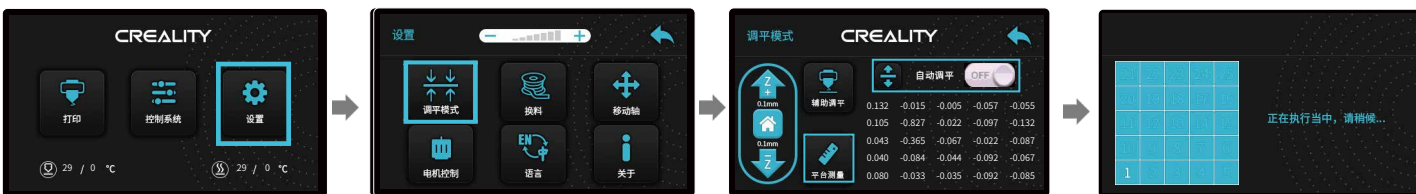
## ◆ Auto-leveling

If you need to realize the auto-leveling, you can have a setting:



## ◆ 自动调平

如果您需要自动调平,可以在下面界面中进行设置:



Notes: The UI information is only for reference, the actual UI may be different.

注意: 界面仅供参考, 实际以UI为准。

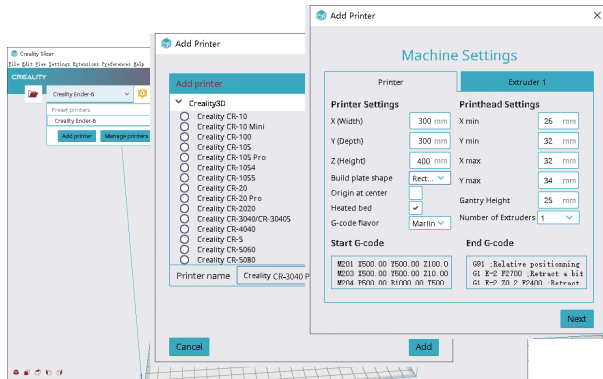
# 10

## Start Printing

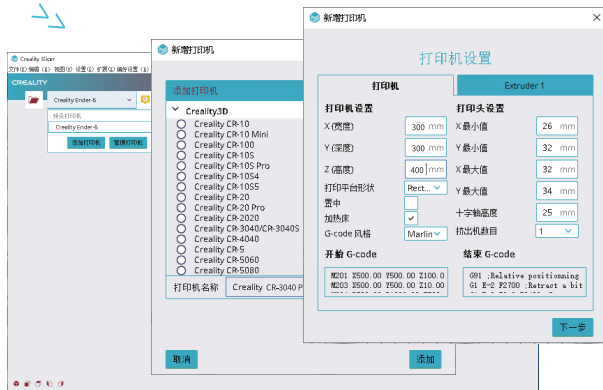
开始打印



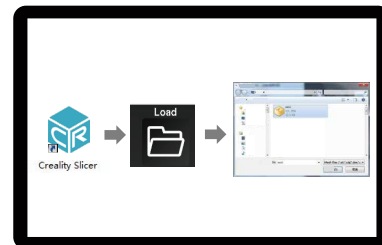
1. Double click to install the software. | 安装软件
2. Double click to open the software. | 打开软件



3. Select language→Next→Select your machine→Next→Finish.



3. 依次选择语言→Next→选择对应机型→Next→Finish, 完成设置。



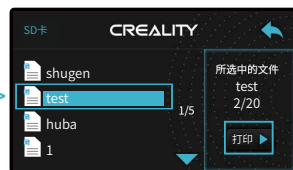
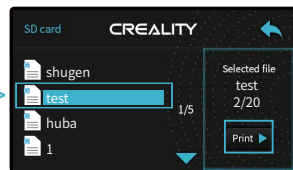
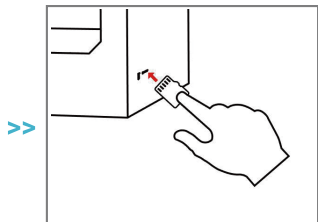
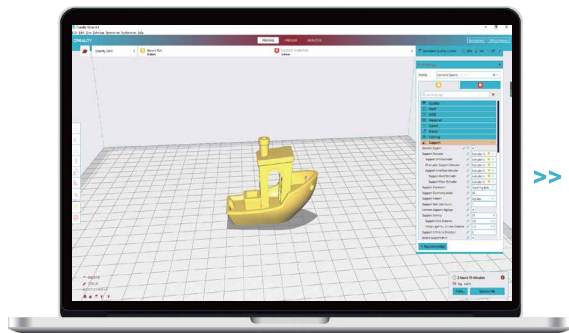
4. Open Creality 3D slicer → Load (Read file) → Select file.  
打开创想三维切片软件→Load (读取文件) → 选择文件。



## 11

## Start Printing

开始打印



5. Generate G-code, and save the gcode file to storage card.  
生成 G 代码→保存到存储卡

6. Insert the storage card → press the knob → select the menu → to the file to be printed.  
插入存储卡→按下旋钮→选择菜单→要打印的文件



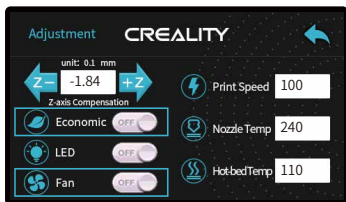
File names must be Latin letters or numbers, not Chinese characters or other special symbols  
文件名需为拉丁字母或数字, 不能为汉字或其他特殊符号



Notes: For details on the software instructions, please refer to the slicing software manual in the memory card!  
温馨提示: 软件使用说明详情, 请见存储卡内切片软件使用手册!

# Notes for printing ABS Materials

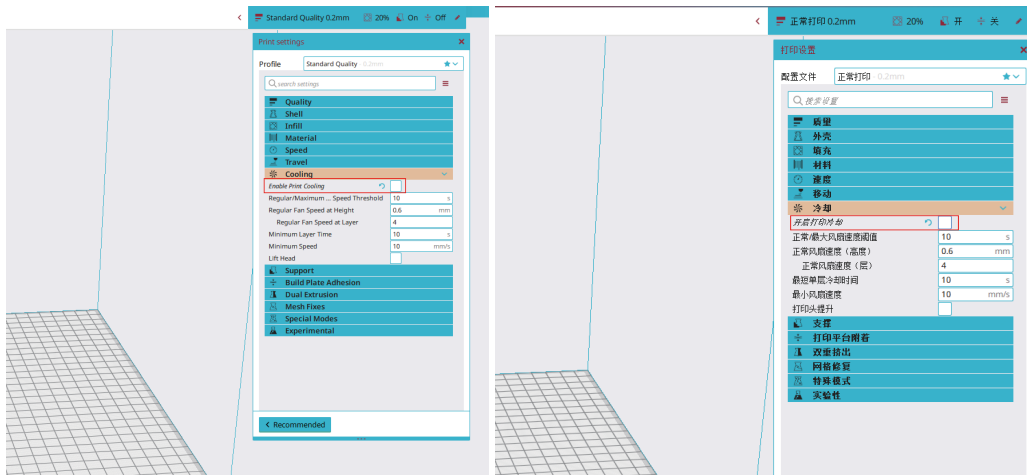
## 打印ABS材料注意事项



1. Turn off the energy-saving, turn off the energy-fan;



- 1.关掉节能模式到OFF，关掉风扇到OFF；

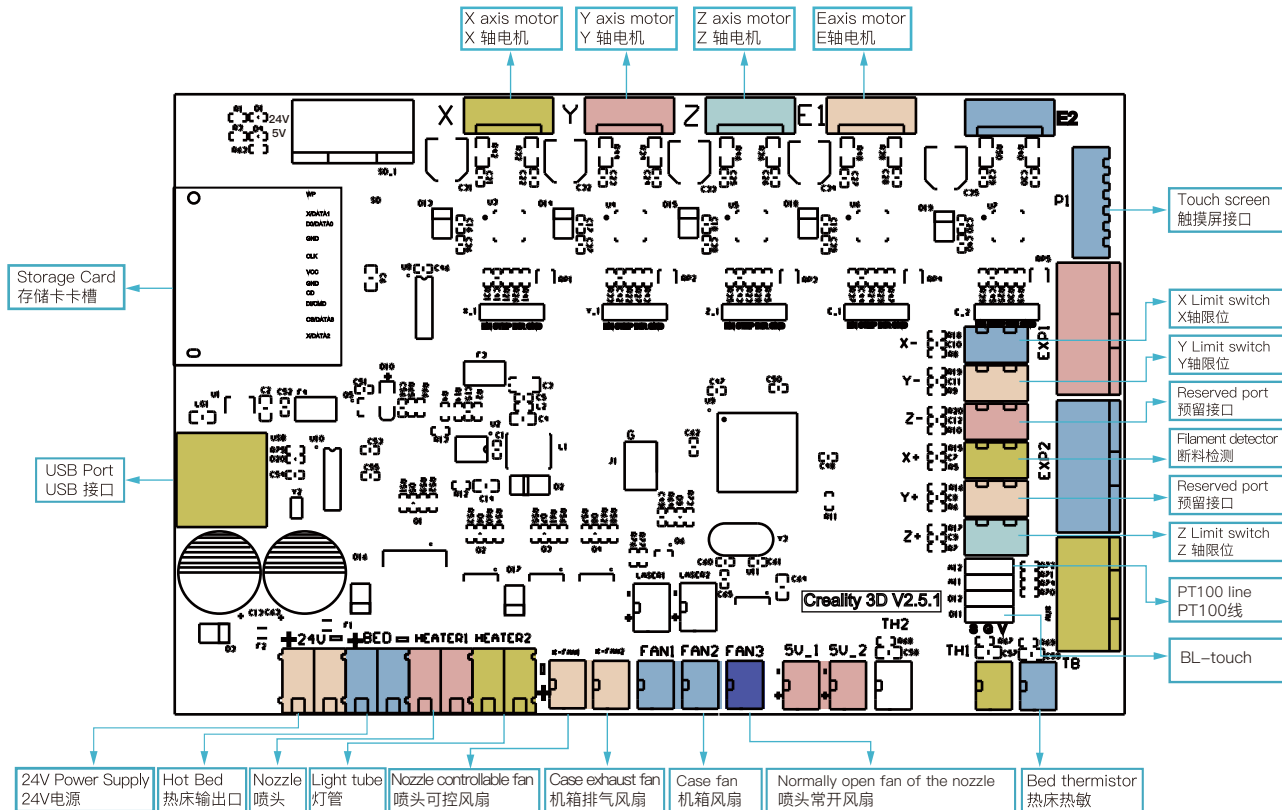


2. The user shall turn off the printing cooling in the design of ABS slice parameters.

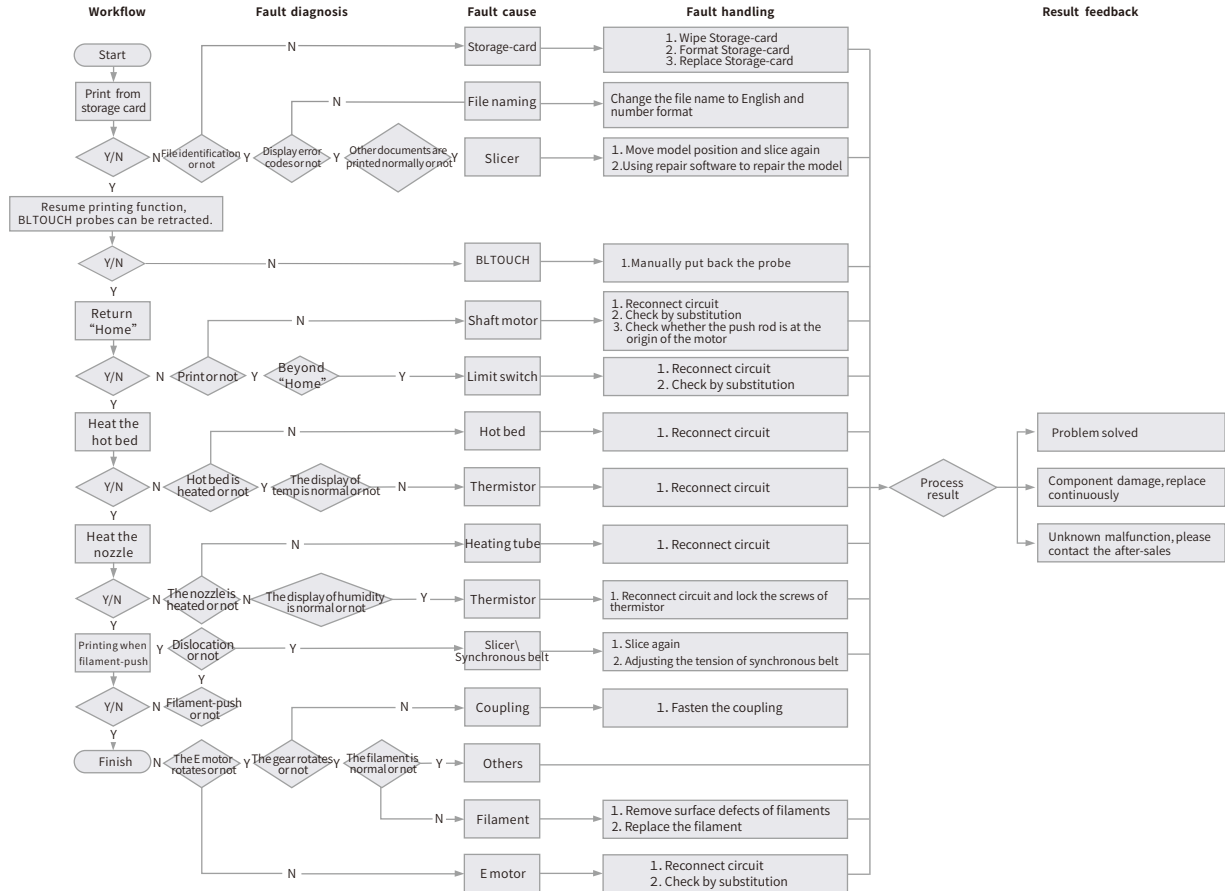
- 2.用户在打ABS切片参数设计上做要求关闭打印冷却。

# Circuit Wiring

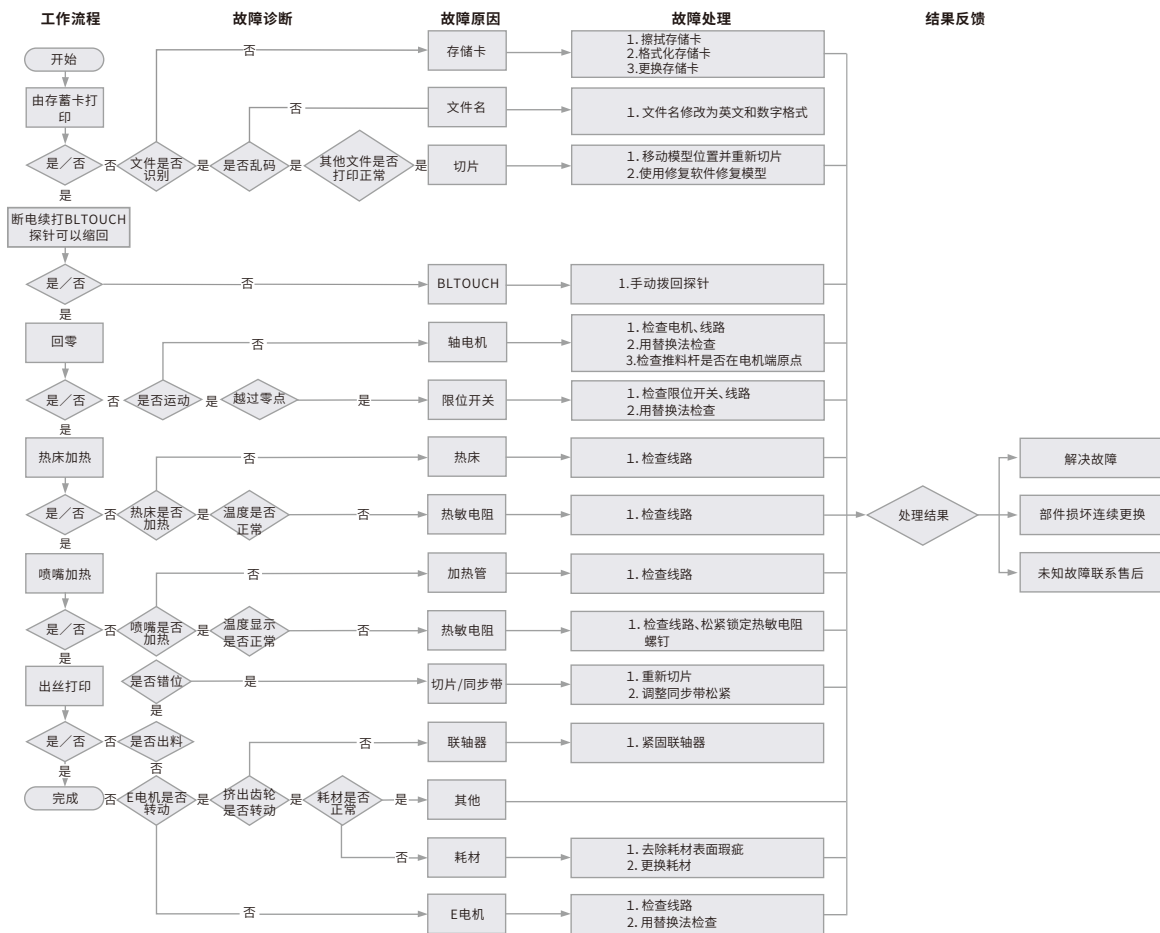
电路接线



# Trouble shooting



# 故障检修



Due to the differences between different machine models, the physical objects and the final images can differ. The final explanation rights shall be reserved by Shenzhen Creality 3D Technology Co., Ltd.

因每款机型不同,实物与图可能有所差异,请以实物为准,最终解释权归深圳市创想三维科技有限公司所有。



**SHENZHEN CREALITY 3D TECHNOLOGY CO.,LTD.**

11F & Room 1201,Block 3,JinChengYuan,Tongsheng Community,  
Dalang,Longhua District,Shenzhen,China,518109

Official Website: [www.creality.com](http://www.creality.com)

Tel: +86 755-8523 4565

E-mail: [info@creality.com](mailto:info@creality.com) [cs@creality.com](mailto:cs@creality.com)



**深圳市创想三维科技有限公司**

深圳市龙华区大浪街道同胜社区金城工业园第三栋1201、11层

公司网站: [www.cxsw3d.com](http://www.cxsw3d.com)

服务热线: 400 6133 882

0755-8523 4565

