

CREALITY
创想三维

创造现实，成就梦想

Create reality, achieve dreams

HALOT-SKY

HALOT-SKY



3D Printer User Manual

3D打印机用户使用手册

V1.0

Dear Consumers,

Thank you for choosing our products. For the best experience, please read the instructions before operating the Printer. Our teams will always be ready to render you the best services. Please contact us via the phone number or e-mail address provided at the end when you encounter any problem with the Printer. For a better experience in using our product, you can also learn how to use the printer in the following ways:

View the accompanied instructions and videos in the U disk.

Visit our official website www.creality.com to find relevant software/hardware information, contact details and operation and maintenance instructions.

尊敬的用户：

感谢您选择创想三维的产品。为了您使用方便，请您在使用之前仔细阅读本说明书，并严格按照说明书的指示进行操作。

创想三维团队时刻准备为您提供优质的服务。在使用过程中无论遇到什么问题，请按照说明书结尾所提供的电话、邮箱与我们进行联系。为了您能够更好地体验我们的产品，您还可以从以下方式获取设备操作知识：

随机使用说明：您可以在U盘内找到相关使用说明及视频。

您还可以登陆创想三维官网(www.cxsw3d.com)寻找相关软硬件、联系方式、设备操作、设备保养等信息。

Firmware Upgrade

Please login the official website <https://www.creality.com/download>, switch the language and select the relevant printer and model and download the required firmware, you can use it after the installation is finished.

固件升级

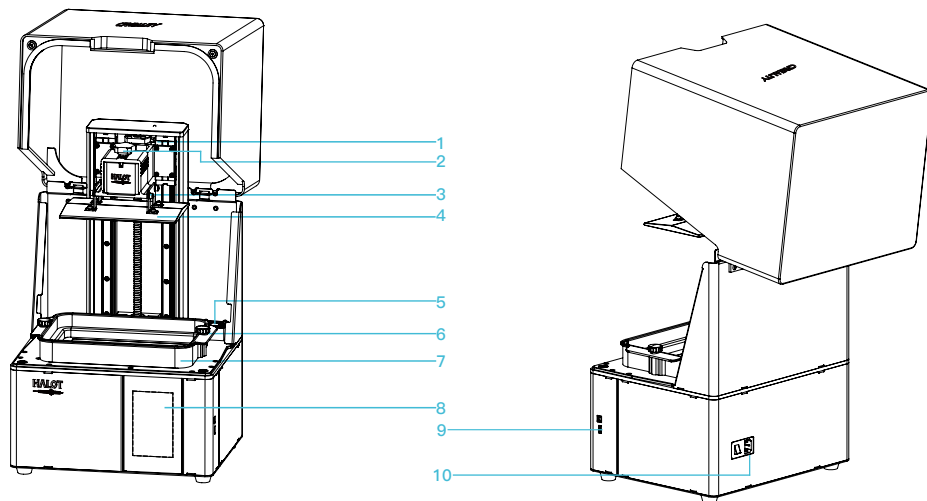
请您登录官网<https://www.cxsw3d.com>，点击首页→服务支持→下载所需固件，安装完成后即可使用。

NOTES 使用须知

- 1 Do not use the printer any way other than described here in order to avoid personal injury or property damage.
- 2 Do not place the printer near any heat source or flammable or explosive objects. We suggest placing it in a well-ventilated, low-dust environment.
- 3 Do not expose the printer to violent vibration or any unstable environment, as this may cause poor print quality.
- 4 Please use recommended resin to in case damage of machine.
- 5 Do not use any other power cable except the one supplied. Always use a grounded three-prong power outlet.
- 6 Please do not open the plastic cover during usage, otherwise the printing will be interrupted.
- 7 Do not wear cotton gloves when operating the printer. Such cloths may become tangled in the printers moving parts leading to burns, possible bodily injury, or printer damage.
- 8 Please wait a moment after the print is finished. And please wear gloves to take out the print by tools.
- 9 Clean the printer frequently. Always turn the power off when cleaning, and wipe with a dry cloth to remove dust, adhered printing plastics or any other material off the frame, guide rails, or wheels. Use glass cleaner or isopropyl alcohol to clean the print surface.
- 10 Children under 10 years should not use the printer without supervision.
- 11 Tips: Do not plug or unplug the power cord when power on.
- 12 Users should comply with the laws and regulations of the corresponding countries and regions where the equipment is located (used), abide by professional ethics, pay attention to safety obligations, and strictly prohibit the use of our products or equipment for any illegal purposes. Creality will not be responsible for any violators' legal liability under any circumstance.

- 1 请勿尝试任何使用说明中没有描述的方法来使用本机，避免造成意外的人身伤害和财产损失；
- 2 请勿将本机放置在易燃易爆物中或高热源附近，请将本机放置在通风、阴凉、少尘的环境下；
- 3 请勿将打印机放置在振动较大或者其他不稳定的环境下，机器晃动会影响打印机打印质量；
- 4 建议使用厂家推荐耗材，以免造成机器损坏；
- 5 请勿在安装过程中使用其他产品电源线代替，请使用本机自带的电源线，电源插头需接插在带有地线的三孔插座；
- 6 请勿在打印机工作时打开打印机面盖，以免影响打印；
- 7 请勿在操作打印机时戴棉手套，以防可动部件对人身造成卷入挤压和切割伤害；
- 8 在打印完后稍等片刻，戴上手套后再取下打印平台，借助工具将平台上的模型取下，清理时请勿直接用手触摸；
- 9 常做产品维护，定期在断电的情况下，用干布对打印机做机身清洁，拭去灰尘和粘结的打印材料、导轨上的异物；
- 10 年龄在10岁以下的儿童，请勿在没有人员监督的情况下使用本机，以免造成人身伤害；
- 11 温馨提示：请勿带电插拔电线；
- 12 使用者应遵守设备所在地（使用地）相应国家、地区法律法规，恪守职业道德，注意安全义务，严禁将我司的产品或设备使用在任何非法用途上。如有违反者所应承担的相关法律责任我司概不负责。

Introduction 设备简介	01-01
Parameters 设备参数	02-02
Parts List 零部件清单	03-03
Assemble the 3D Printer 组装3D打印机	04-04
Use the 3D Printer 使用3D打印机	05-11
Start Printing 首次打印	12-15
Control remote printing 远程控制打印	16-17
Wiring Connection 电路接线	18-18
Troubleshooting 故障检修	19-20



- 1 Limit switch
限位开关
- 2 Hexalobular socket screw
梅花胶头手拧螺丝
- 3 Leveling screw
调平螺钉
- 4 Buliding platform
成型平台

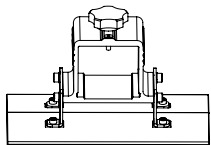
- 5 Air filter
空气过滤器
- 6 Hexalobular socket screw
梅花胶头手拧螺丝
- 7 Resin vat
料盘
- 8 Touch screen
显示屏

- 9 USB port
USB接口
- 10 Power socket
电源接口

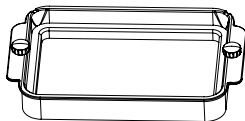
Basic Parameters 基本参数

Model 型号	HALOT-SKY
Software language 软件语言	English 中文
Print method 打印方式	U disk U盘 Online Printing of Creality Cloud 创想云在线打印
X/Y-axis resolution X、Y分辨率	0.05mm 3840*2400
Z-axis resolution Z轴精度	0.01mm-0.1mm(layer thickness 即层厚)
Print speed 打印速度	1-4S/ layer 即每层打印时间
Special filaments 专用耗材	Common rigid photosensitive resin, Standard resin, High hardness, High toughness, Dental model resin. 普通刚性光敏树脂、标准树脂、弹性树脂、高硬度、高韧性树脂、牙模树脂
Light source configuration 光源配置	UV integrated lamp bead (wavelength 405nm) 紫外线集成灯珠(波长405nm)
Operation system 操作系统	windows 7 and above systems, mac systems windows 7以上系统, mac系统
Nominal power 额定功率	250W
Print size 成型尺寸	192*120*200mm (length*width * height) 192*120*200mm (长*宽*高)
Machine size 设备尺寸	340*292*552mm
Package size 包装尺寸	450*390*705mm
Machine weight 机器重量	16.5KG
Gross weight 机器毛重	22.45KG
Display screen 显示屏幕	5inch 5英寸

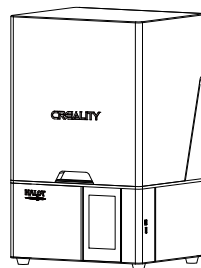
3. Package Content 零件清单



1 Print platform | 打印平台 x 1



2 Resin vat | 料盘 x 1



3 3D printer | 打印机 x 1

Tool list 工具包清单



1 U disk x 1
U盘



2 Screwdrivers x 1
螺丝刀工具包



3 Brush x 1
油漆刷



4 Plastic blade x 1
塑胶铲刀



5 Resin filter x 4
纸漏斗



6 Release film x 1
离型膜



7 Metal blade x 1
金属铲刀



8 Power cord x 1
电源线



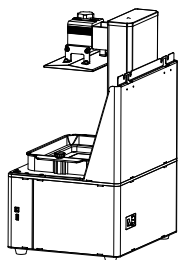
9 Vat cover x 1
料槽防尘盖



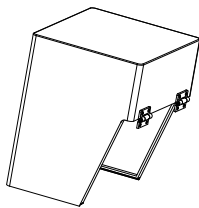
10 Calibration card x 1
校准卡片

Tips: the above accessories are for reference only, in kind prevail! 注意: 以上配件仅供参考, 请以实物为准!

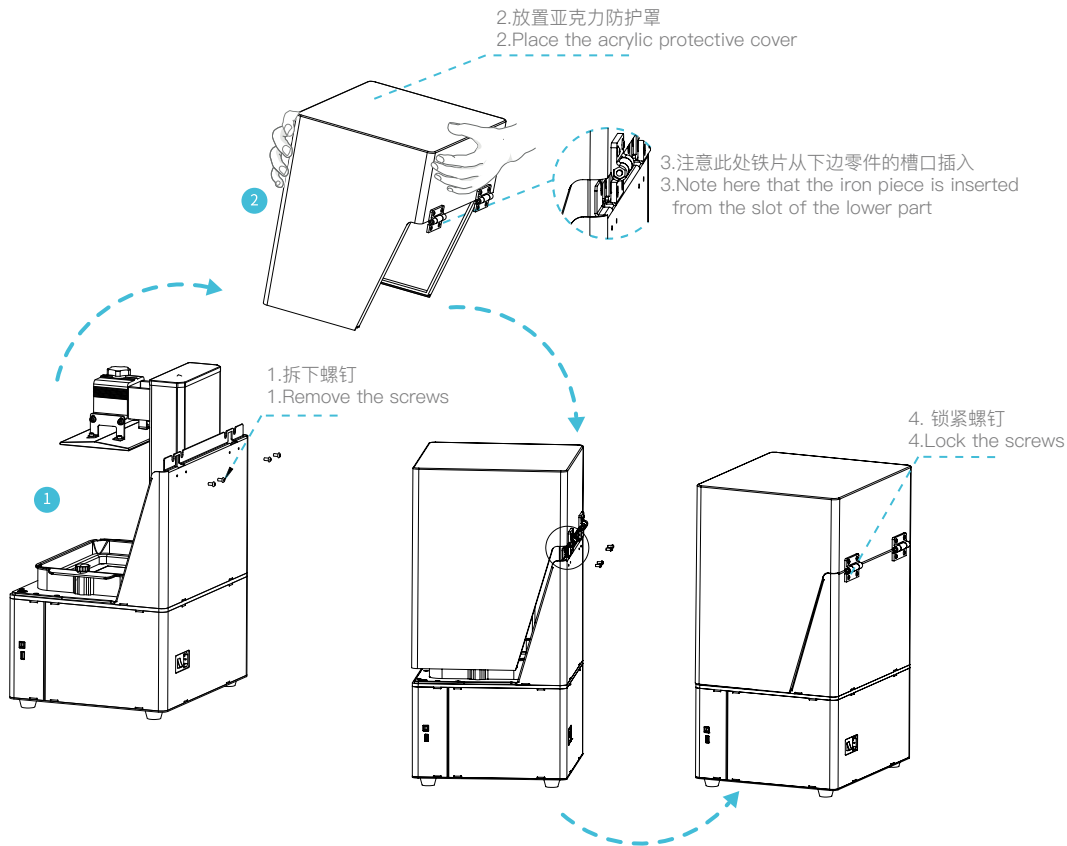
4. Assemble the 3D Printer 组装3D打印机



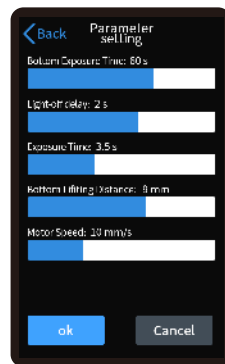
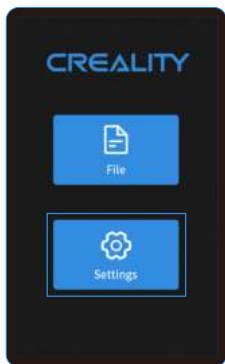
1 Machine body | 主机 x 1



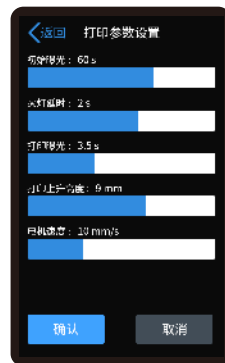
2 Plastic cover | 上盖 x 1



Setting

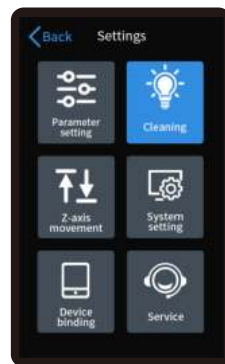
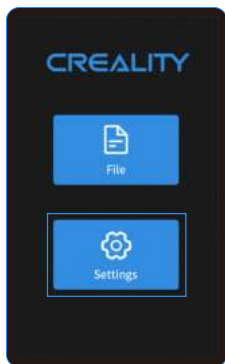


设置



Note: The current interface is for reference only, due to the continuous upgrading of functions, the actual to the official website of the latest firmware UI as the standard.
 注意：当前界面仅供参考，由于功能不断升级，实际以官网最新固件UI为准。

Setting

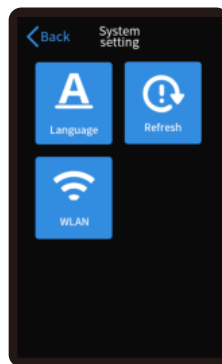
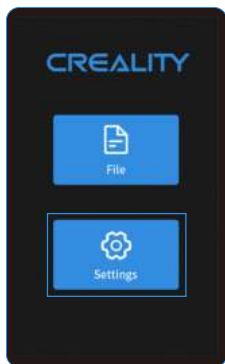


设置



Note: The current interface is for reference only, due to the continuous upgrading of functions, the actual to the official website of the latest firmware UI as the standard.
 注意：当前界面仅供参考，由于功能不断升级，实际以官网最新固件UI为准。

Setting



设置



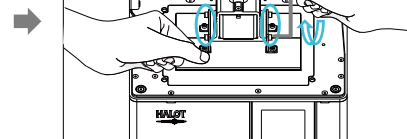
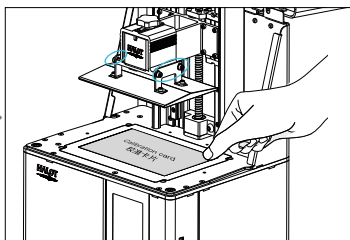
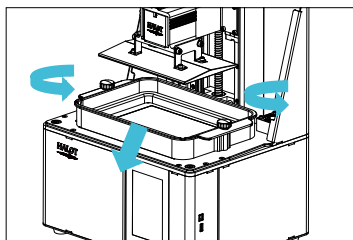
Note: The current interface is for reference only, due to the continuous upgrading of functions, the actual to the official website of the latest firmware UI as the standard.
注意：当前界面仅供参考，由于功能不断升级，实际以官网最新固件UI为准。

6. Level Platform 调平平台1



Note: The printing platform has been leveled at the factory. If it needs leveling due to transportation or other reasons, please follow the steps below to adjust the printing platform.

注意:打印平台出厂时已调平,若因运输或其他原因需要调平,可以进行以下步骤进行打印平台调平。

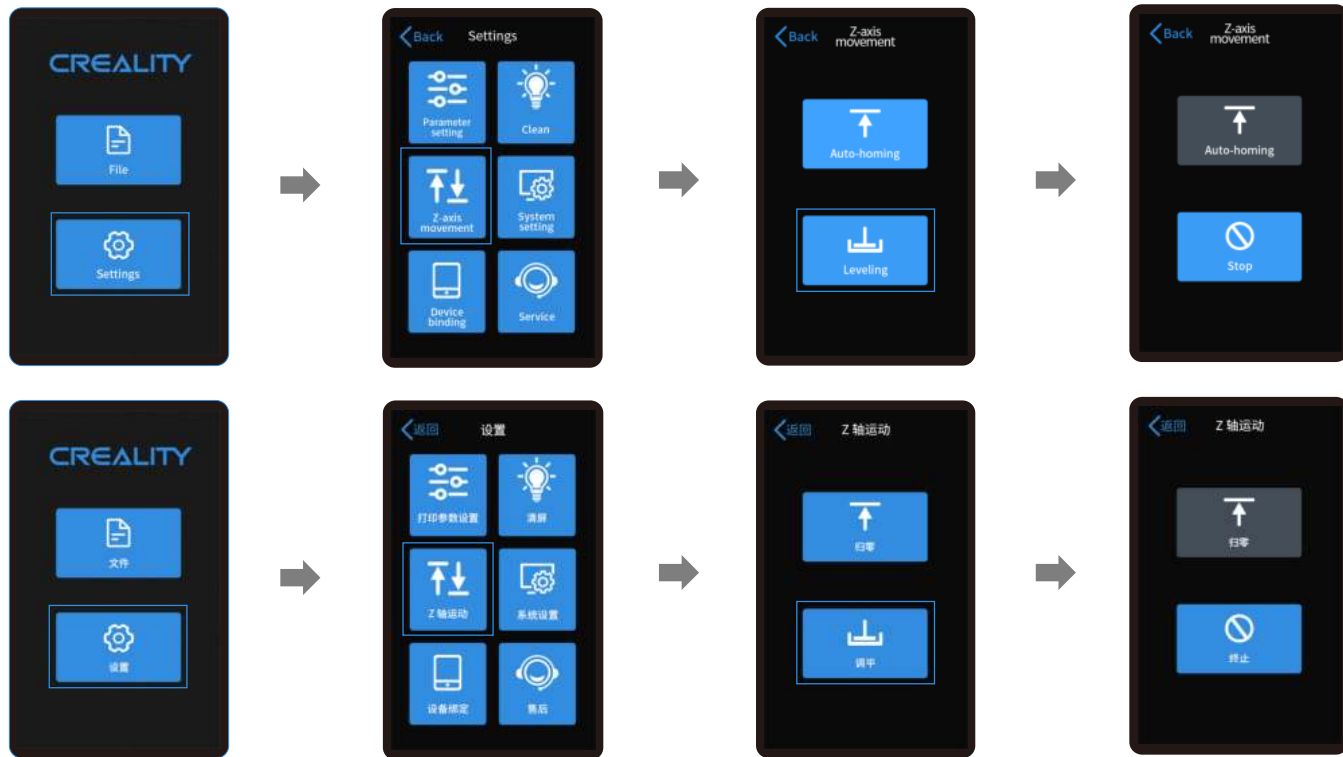


1. To calibrate the printing platform, first raise the platform, loosen the fixing screws on the left and right sides of the material trough, and take out the material trough;
进行打印平台的校准,首先上升平台,拧松料槽左右两侧料盘固定螺丝,将料槽取出;

2. Loosen the four Leveling screw of the prototyping platform, attach Calibration card tightly to the print screen, press Settings → Z Axis Motion → Levelling (Refer to operating steps of levelling platform 2 for operation), to check whether the platform fits evenly with the paper.
松开成型平台的四颗调平螺丝,将校准卡片贴紧打印屏,按设置→Z轴运动→调平(参照调平平台2步骤作业),检查平台是否与纸张均匀贴合;

3. After confirming that Calibration card fits evenly with the platform, screw up the four screws of the platform.
确认校准卡片均匀贴合后,锁紧平台的四颗螺丝。

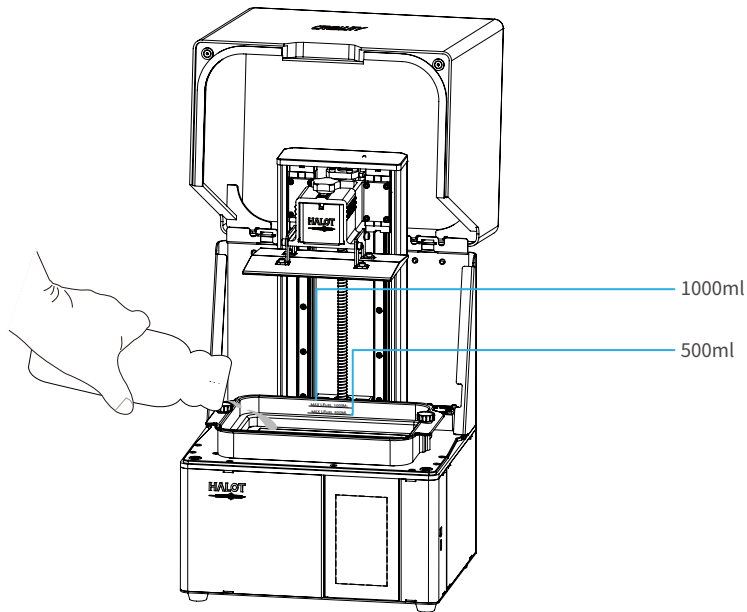
6. Level Platform 调平台2



Note: The current interface is for reference only, due to the continuous upgrading of functions, the actual to the official website of the latest firmware UI as the standard.
注意：当前界面仅供参考，由于功能不断升级，实际以官网最新固件UI为准。

7. Load Resin 装料

Pour the UV photosensitive resin into the resin vat. The slot capacity is 500ml/1000ml.
将3D打印机 UV 光敏树脂倒入料盘,槽位容量分别:500ml/1000ml。



Tips: How to change resin:

Take out the resin vat slowly, pour out the remaining resin into the container, clean the resin vat, pour in new resin, and then install the resin vat to the machine.

提示: 如何更换耗材?

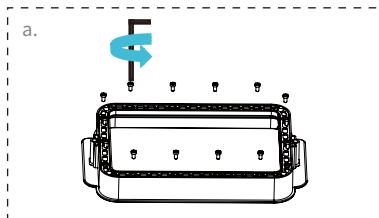
将料盘缓缓取出,把剩余树脂倒入容器,清洗干净料盘,重新倒入新树脂,再把料盘安装到机器即可。



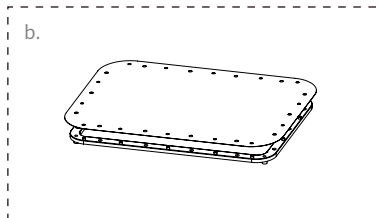
Caution : Resin may cause skin irritation or an allergic skin reaction. Please wear gloves before use to avoid direct contact with the skin.

警示: 请戴上手套方可进行装料,光敏树脂为刺激性材料,避免接触到皮肤。

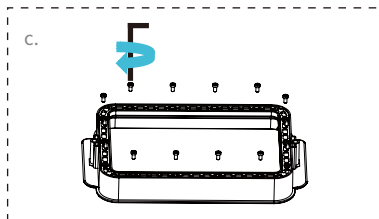
Installation steps 安装步骤



- a. First, remove the 14 screws at the bottom of the vat and take down the old release film.
首先拆卸料槽底部的14颗螺丝,取出坏的离型膜。

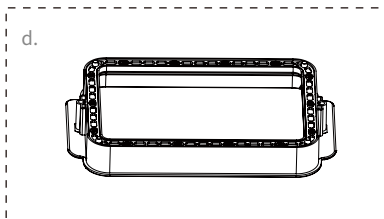


- b. Prepare the new release film, peel off the the protective films on both sides of the release film. Align the holes and fit the release film on the clamping ring.
撕掉新的离型膜两个面上的保护膜,对好孔然后将离型膜套在压圈上的柱子上。



- c. Finally, place the film-ring assembly back into the vat frame gently, then intall and tighten the fixing screws diagonally.
最后将套好离型膜的压圈放回料槽,安装14颗螺丝并采用对角方式锁紧。

- d. The installed release film is as shown.
安装好的离型膜如下图。



Parameters 规格参数



尺寸:190mm*266mm
(Size)

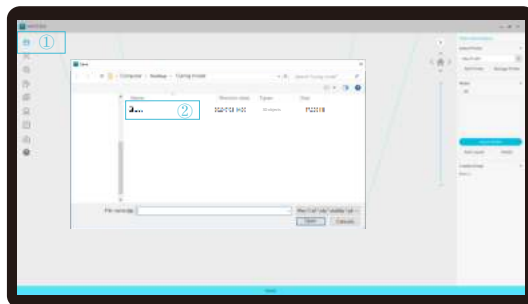


厚度:0.15-0.2mm
(Thickness)

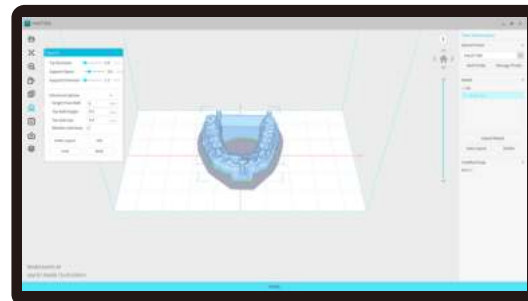


透光率:95%
(Light Transmittance)

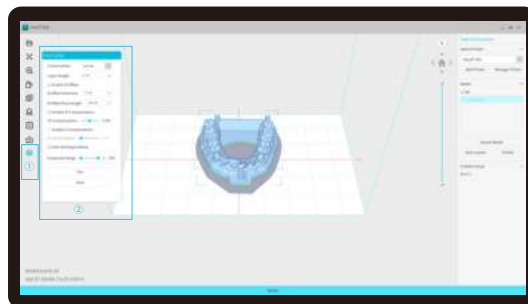
1. Slice



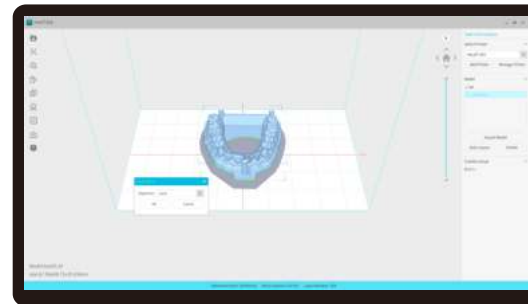
1. Open the slice software of LCD 3D printer, click “open” on the left of the screen and add model file.



2. If the model needs to add support, click the upper left icon to set corresponding parameters.

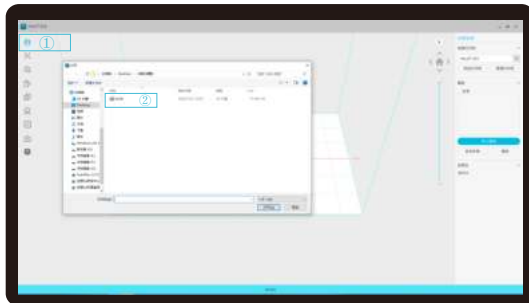


3. Click icon ①→Setting slice printing parameters②→Click “Slice”

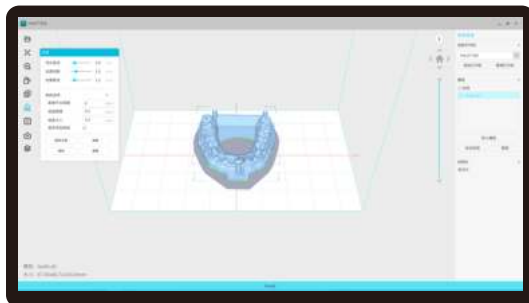


4. waiting for slice to be finished→save the sliced file
You are welcome to find more details of slicing tutorial on the official website www.creality.com).

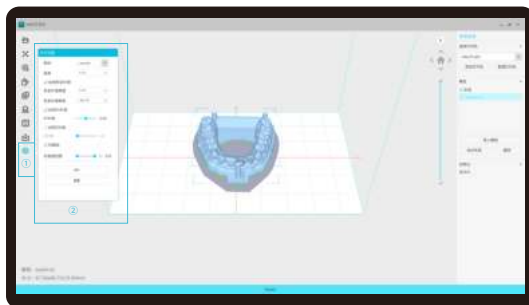
1. 切片



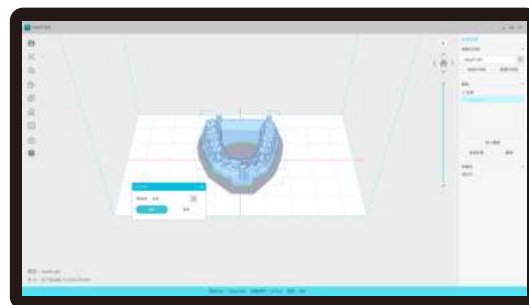
1. 打开LCD光固化3d打印切片软件, 界面左方点击“打开”添加模型文件;



2. 根据模型如需添加支架, 点击左上方图标, 设置相应参数;

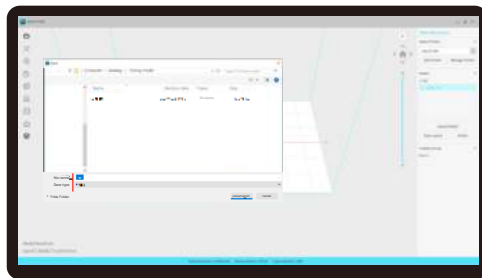


3. 点击图标①→设置切片打印参数②→点击切片

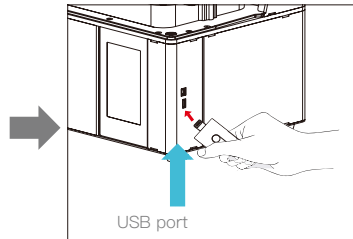


4. 等待完成切片后→另存切片好的文件。
(*切片教程详见官网切片视频www.cxsw3d.com)

2. Print

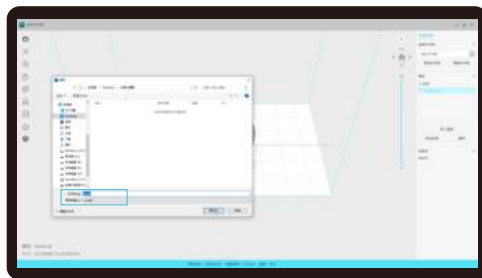


1. Generate cxdlp file, and save the file to U disk.

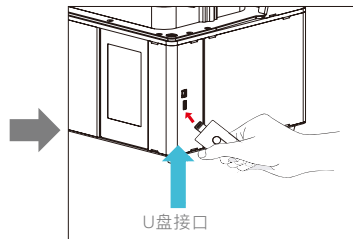


2. Insert the U disk → press the print button.

2. 打印

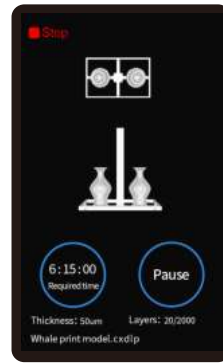
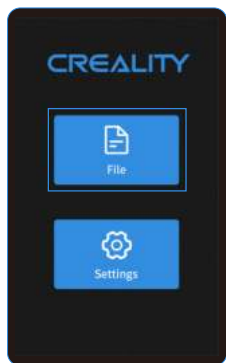


1. 生成 cxdlp 文件 → 保存文件到 U 盘



2. 插入 U 盘 → 按下打印按键

9. Start Printing 首次打印



1. select files.

2. Select the file to be printed and press "Start".

3. Printing.



1. 选择文件

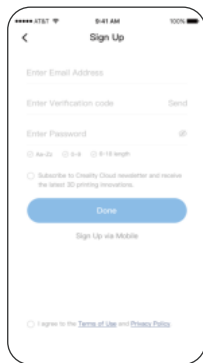
2. 选中需要打印的文件, 按下开始键

3. 正在打印中

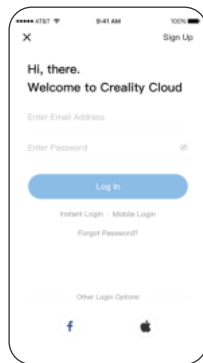
10. Control remote printing 远程控制打印



1.Download



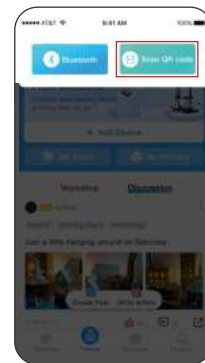
2.Register



3.Log in



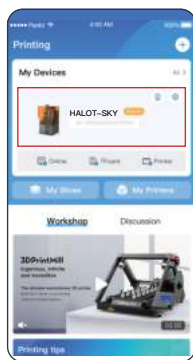
4. Add equipment



5. Scan QR Code



6. Device naming



7. Select device



8. check printing status



9. Print Progress

10. Control remote printing 远程控制打印



1. 下载



2. 注册



3. 登录



4. 新增设备



5. 扫一扫
(机器界面设置→设备绑定→二维码)



6. 设备命名



7. 选择设备

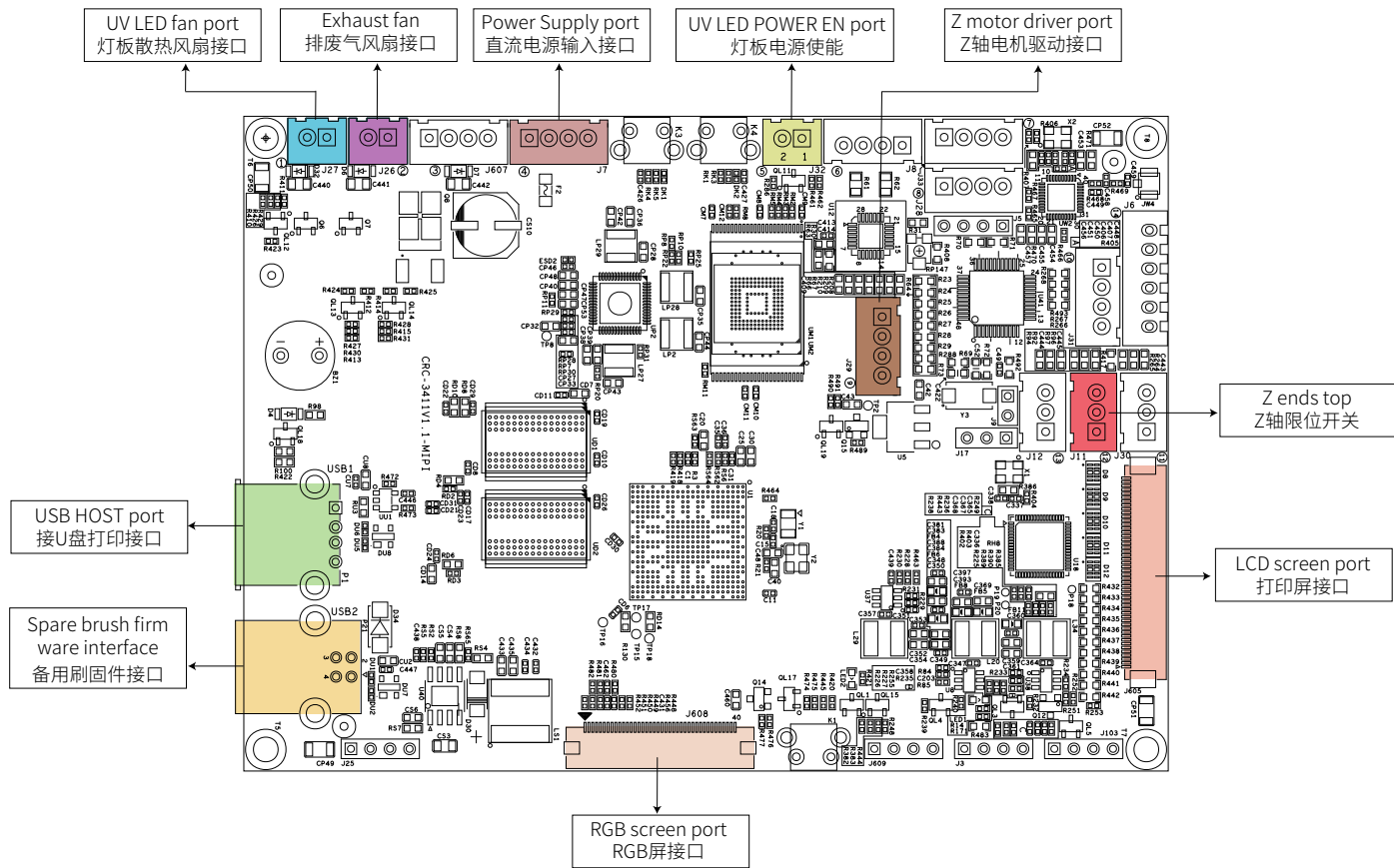


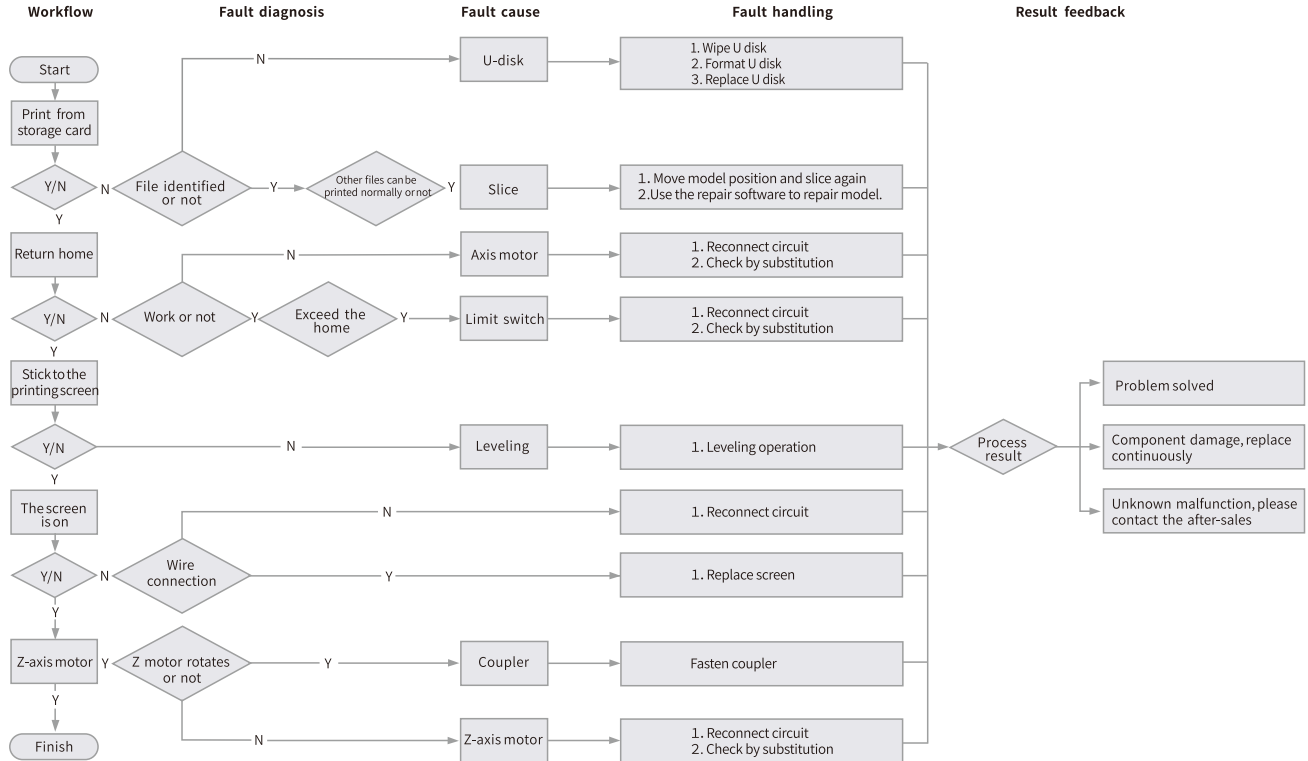
8. 查看打印状态

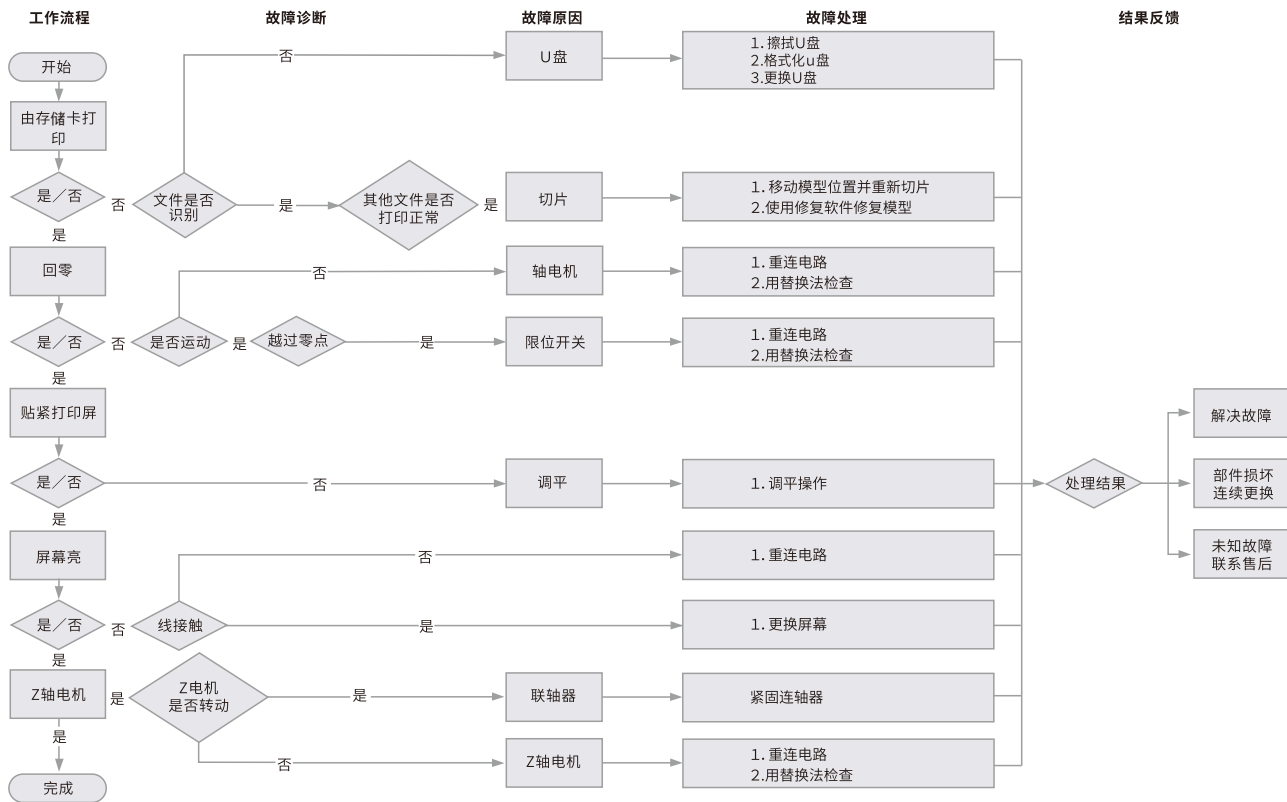


9. 打印进度

11. Wiring Connection 电路接线









FCC Caution:

Any Changes or modifications not expressly approved by the party responsible for compliance could void the user's authority to operate the equipment.

This device complies with part 15 of the FCC Rules. Operation is subject to the following two conditions: (1) This device may not cause harmful interference, and (2) this device must accept any interference received, including interference that may cause undesired operation.

IMPORTANT NOTE:

Note: This equipment has been tested and found to comply with the limits for a Class B digital device, pursuant to part 15 of the FCC Rules. These limits are designed to provide reasonable protection against harmful interference in a residential installation. This equipment generates, uses and can radiate radio frequency energy and, if not installed and used in accordance with the instructions, may cause harmful interference to radio communications. However, there is no guarantee that interference will not occur in a particular installation. If this equipment does cause harmful interference to radio or television reception, which can be determined by turning the equipment off and on, the user is encouraged to try to correct the interference by one or more of the following measures:

- Reorient or relocate the receiving antenna.
- Increase the separation between the equipment and receiver.
- Connect the equipment into an outlet on a circuit different from that to which the receiver is connected.
- Consult the dealer or an experienced radio/TV technician for help.

FCC Radiation Exposure Statement:

This equipment complies with FCC radiation exposure limits set forth for an uncontrolled environment.

This equipment should be installed and operated with minimum distance 20cm between the radiator& your body.

Due to the differences between different machine models, the physical objects and the final images can differ. The final explanation rights shall be reserved by Shenzhen Crealty 3D Technology Co., Ltd.

因每款机型不同，实物与图可能有所差异，请以实物为准，最终解释归深圳市创想三维科技股份有限公司所有。



SHENZHEN CREALTY 3D TECHNOLOGY CO., LTD.

Add: 18F, JinXiuHongDu Building, Meilong Blvd., Longhua Dist.,
Shenzhen, China 518131

Official Website: www.crealty.com

Tel: +86 755-8523 4565

E-mail: info@creality.com cs@creality.com

深圳市创想三维科技股份有限公司

深圳市龙华区民治街道新牛社区梅龙大道锦绣鸿都大厦18F

公司网站: www.cxsw3d.com

服务热线: 400 6133 882 0755-8523 4565

Scan To Learn More
扫码了解更多



R 211-210605