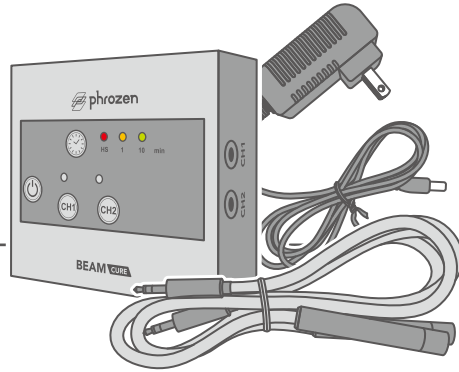




Post Curing UV Light String User Manual

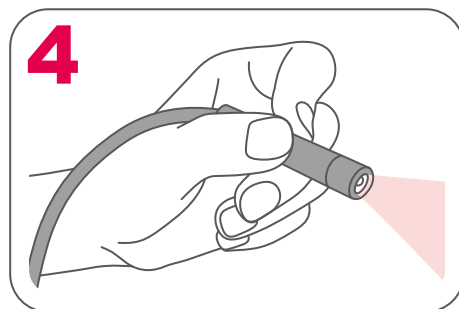
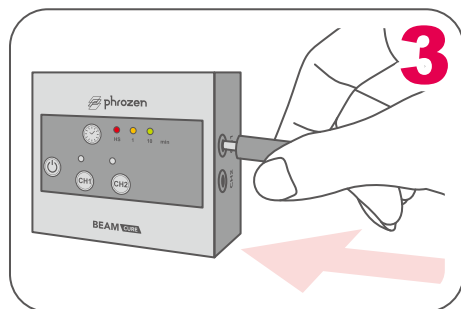
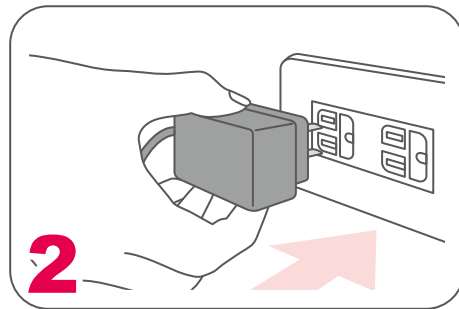
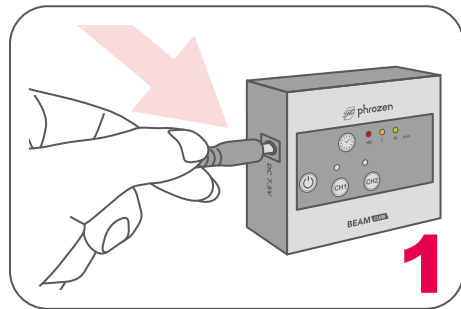
BEAM CURE



Product Specifications

Voltage DC 7.5V Wavelength 700 ma LED Specifications 405 nm Power 5 Watts

01 Step-by-Step Instructions



02 Button Functionality

TIMER H.S

When the device is turned on manually, the red indicator light will be turned on as well. The UV light will then be on continuously until the device has been turned off. If the UV light hasn't been used for 60 minutes, the device will automatically turn off.

TIMER 1 MIN

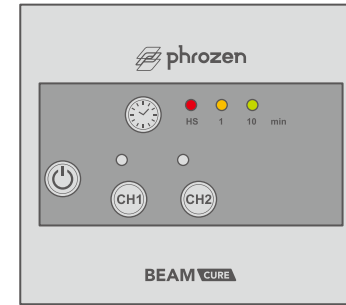
When the yellow indicator light is turned on, the UV light will automatically turn off after 1 minute.

TIMER 10 MIN

When the green indicator light is turned on, the UV light will automatically turn off after 10 minutes.

POWER

Click on the Power button to turn on (or turn off) the device. Once the device has been turned on, the indicator light from the Timer H.S button will light up in red. Click on the Power button one more time to turn off the device.



CH1 CH1

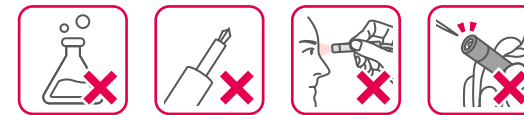
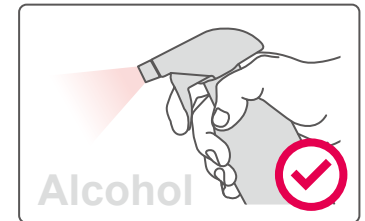
This is the CH1 electric power connector.

CH2 CH2

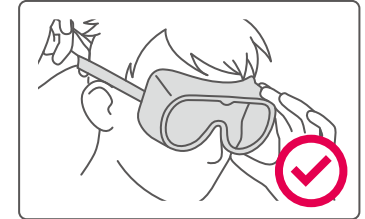
This is the CH2 electric power connector.

Warning

- DO NOT stare directly at the UV light. Please wear safety glasses before usage.
- DO NOT touch or poke the UV light source with sharp objects.
- Please do not use electric cords from other devices.
- Do not use any chemicals to rub the lense of the UV light device.
- Do not use it with other adaptors.



Maintenance : Please use sanitizing alcohol to clean the exterior of the device. Do not use any oily or corrosive liquids to clean the device.



Facebook



Facebook Group



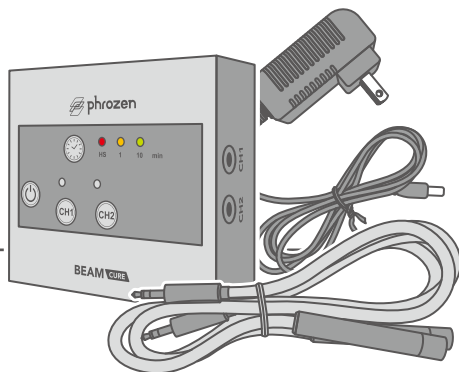
YouTube



Instagram

光固化 UV 燈筆使用說明

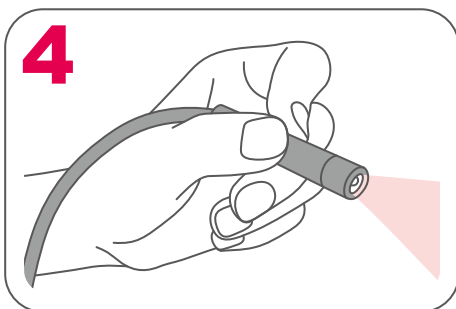
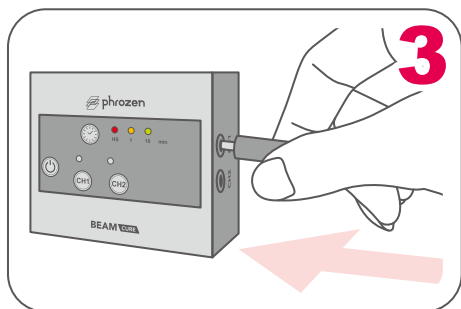
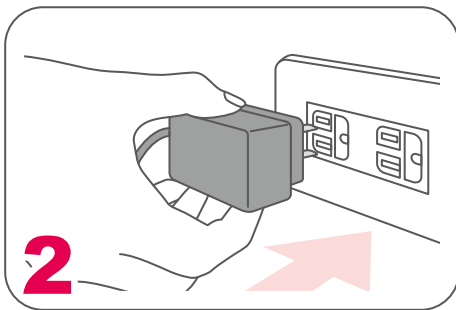
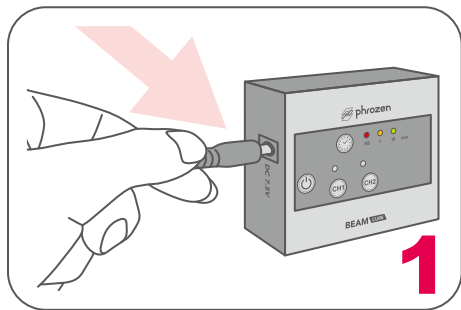
BEAM CURE



產品規格

電 壓 DC 7.5V 電 流 700 ma LED 波長 405 nm 功 率 5瓦

01 使用步驟



02 按鍵功能

TIMER H.S

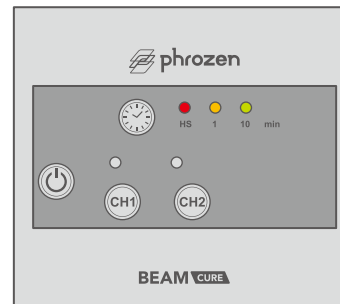
手動模式指示燈。當紅燈亮起時為手動模式，UV燈筆恆亮。若閒置60分鐘未使用UV燈筆將自動關閉電源。

POWER

控制電源開關。按一下按鈕HS紅燈亮表示通電；再按一次則關閉電源。

TIMER 1 MIN

1分鐘使用模式指示燈。當黃燈亮起時，UV燈筆將定時1分鐘後自動關燈。



TIMER 10 MIN

10分鐘使用模式指示燈。當綠燈亮起時，UV燈筆將定時10分鐘後自動關燈。

CH1 CH1

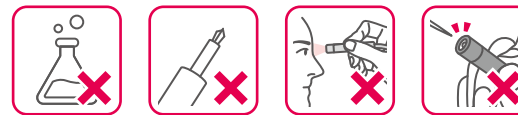
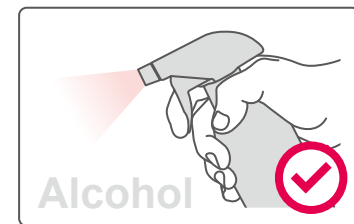
開啟或關閉連接CH1的UV燈筆。

CH2 CH2

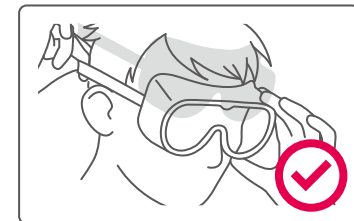
開啟或關閉連接CH2的UV燈筆。

注 意 事 項

- 請勿將光源直射眼睛，使用前請戴上護目鏡。
- 請勿撞擊或以尖銳物觸碰UV燈筆發光處。
- 請勿使用其他產品連接控制器。
- 請勿用化學藥水擦拭燈珠。
- 請勿使用其他適配器。



保養方式 如需外觀清潔請用酒精擦拭，請勿用油性或腐蝕性的液體擦拭。



Facebook



Facebook
台灣站社團



YouTube



Instagram