

CREALITY



CREATE REALITY, ACHIEVE DREAMS

HALOT-LITE

HALOT-LITE

# 3D Printer User Manual

V1.4

## Dear Consumers,

Thank you for choosing our products. For the best experience, please read the instructions before operating the Printer. Our teams will always be ready to render you the best services. Please contact us via the phone number or e-mail address provided at the end when you encounter any problem with the Printer. For a better experience in using our product, you can also learn how to use the printer in the following ways:

View the accompanied instructions and videos in the U disk.

Visit our official website [www.creality.com](http://www.creality.com) to find relevant software/hardware information, contact details and operation and maintenance instructions.

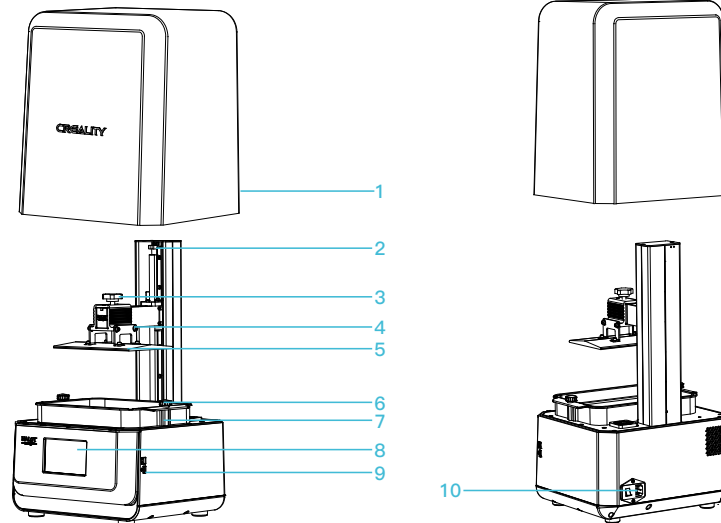
## Firmware Upgrade

Please login the official website <https://www.creality.com/download>, switch the language and select the relevant printer and model and download the required firmware, you can use it after the installation is finished.

## NOTES

- ① Do not use the printer any way other than described here in order to avoid personal injury or property damage.
- ② Do not place the printer near any heat source or flammable or explosive objects. We suggest placing it in a well-ventilated, low-dust environment.
- ③ Do not expose the printer to violent vibration or any unstable environment, as this may cause poor print quality.
- ④ Please use recommended resin to in case damage of machine.
- ⑤ Do not use any other power cable except the one supplied. Always use a grounded three-prong power outlet.
- ⑥ Please do not open the plastic cover during usage, otherwise the printing will be interrupted.
- ⑦ Do not wear cotton gloves when operating the printer. Such cloths may become tangled in the printers moving parts leading to burns, possible bodily injury, or printer damage.
- ⑧ Please wait a moment after the print is finished. And please wear gloves to take out the print by tools.
- ⑨ Clean the printer frequently. Always turn the power off when cleaning, and wipe with a dry cloth to remove dust, adhered printing plastics or any other material off the frame, guide rails, or wheels. Use glass cleaner or isopropyl alcohol to clean the print surface.
- ⑩ Children under 10 years should not use the printer without supervision.
- ⑪ Tips: Do not plug or unplug the power cord when power on.
- ⑫ Users should comply with the laws and regulations of the corresponding countries and regions where the equipment is located (used), abide by professional ethics, pay attention to safety obligations, and strictly prohibit the use of our products or equipment for any illegal purposes. Creality will not be responsible for any violators' legal liability under any circumstance.

Introduction . . . . .	01-01
Parameters . . . . .	02-02
Parts List . . . . .	03-03
Use the 3D Printer . . . . .	04-09
Start Printing . . . . .	10-12
Control remote printing . . . . .	13-13
Wiring Connection . . . . .	14-14
Troubleshooting . . . . .	15-17



1 Protective cover

2 Limit switch

3 Hexalobular socket screw

4 Leveling screw

5 Building platform

6 Hexalobular socket screw

7 Resin vat

8 Touch screen

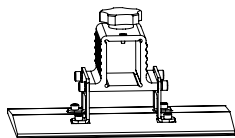
9 USB port

10 Power socket

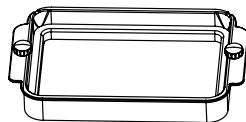
### Basic Parameters

Model Name	HALOT-LITE
Build Size	192*120*200mm (length,width and height)
XY Axis Resolution	3840*2400
XY Axis Accuracy	0.05mm
Print speed	1-4S/layer
Layer Thickness	0.01-0.2mm
Touch Screen	5 inch touch screen
Light Source Type	Integral light source (wavelength 405nm)
Rated Voltage	100-240Va.c, 50/60Hz
Rated Power	250W
Machine Size	330*301*572mm
Package size	425*393*685mm
Net Weight	10.6KG
Gross Weight	13.5KG
Print Method	USB Disk, Creality Cloud
Machine Language	中文(简/繁)/ English/ Español/ Deutsche/ Français/ Русский/ Português/ Italiano/ Türk/Nederlands/Poliskie/日本語/한국어
Slicing Software Operation System	Win7/Win8/Win 10 64bit, Mac system (32-bit is not supported)
Compatible Resin	Common rigid photosensivie resin, Standard resin, Hight hardness,High toughness, Dental model resin.

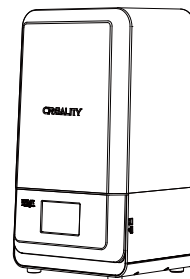
### 3. Package Content



1 Print platform x 1



2 Resin vat x 1



3 3D printer x 1

#### Tool list



1 U disk x 1



2 Screwdrivers x 1set



3 Brush x 1



4 Plastic blade x 1



5 Resin filter x 4



6 Release film x 1



7 Metal blade x 1



8 Power cord x 1



9 Vat cover x 1



10 Calibration card x 1

Tips: the above accessories are for reference only, in kind prevail!

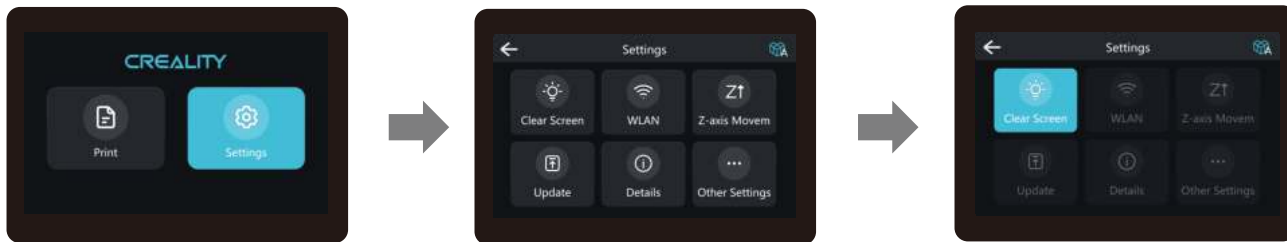
### Print



Note: The current interface is for reference only, due to the continuous upgrading of functions, the actual to the official website of the latest firmware UI as the standard.



### Setting

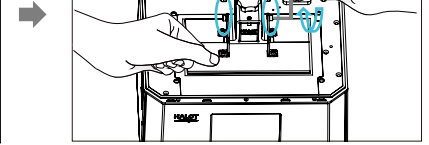
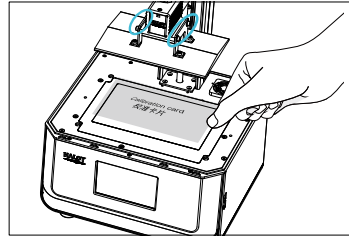
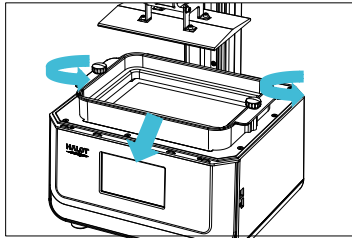


Note: The current interface is for reference only, due to the continuous upgrading of functions, the actual to the official website of the latest firmware UI as the standard.

## 5. Level Platform



Note: The printing platform has been leveled at the factory. If it needs leveling due to transportation or other reasons, please follow the steps below to adjust the printing platform.



1. To calibrate the printing platform, first raise the platform, loosen the fixing screws on the left and right sides of the material trough, and take out the material trough;

2. Loosen the four Leveling screw of the prototyping platform, attach Calibration card tightly to the print screen, press Settings → Z Axis Motion → Levelling (Refer to operating steps of levelling platform 2 for operation.) , to check whether the platform fits evenly with the paper.

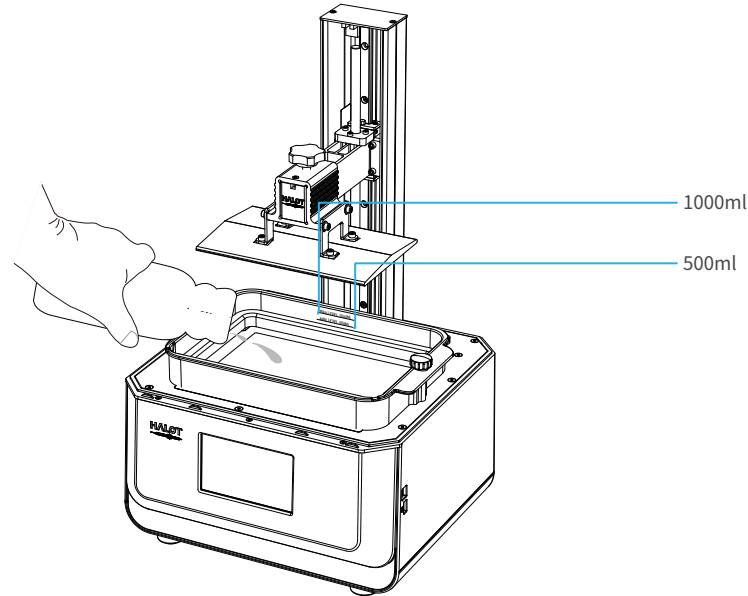
3. After confirming that Calibration card fits evenly with the platform, screw up the four screws of the platform.



Note: The current interface is for reference only, due to the continuous upgrading of functions, the actual to the official website of the latest firmware UI as the standard.

## 6. Load Resin

Pour the UV photosensitive resin into the resin vat. The slot capacity is 500ml/1000ml.

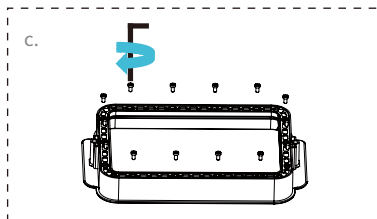
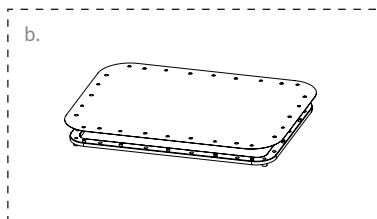
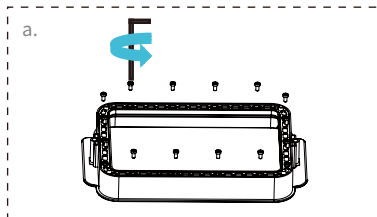


**Tips: How to change resin:**  
Take out the resin vat slowly, pour out the remaining resin into the container, clean the resin vat, pour in new resin, and then install the resin vat to the machine.



**Caution :** Resin may cause skin irritation or an allergic skin reaction. Please wear gloves before use to avoid direct contact with the skin.

### Installation steps

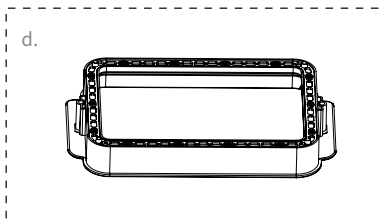


a. First, remove the 14 screws at the bottom of the vat and take down the old release film.

b. Prepare the new release film, peel off the the protective films on both sides of the release film. Align the holes and fit the release film on the clamping ring.

c. Finally, place the film-ring assembly back into the vat frame gently, then intall and tighten the fixing screws diagonally.

d. The installed release film is as shown.



#### Parameters



190mm\*266mm  
(Size)

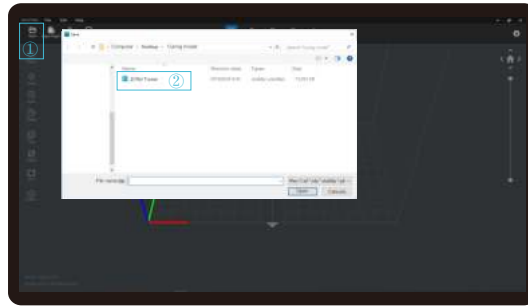


0.15-0.2mm  
(Thickness)

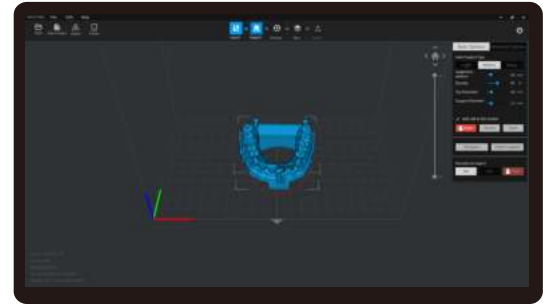


95%  
(Light Transmittance)

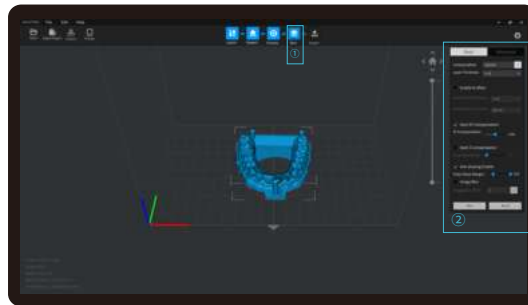
### 1. Slicer



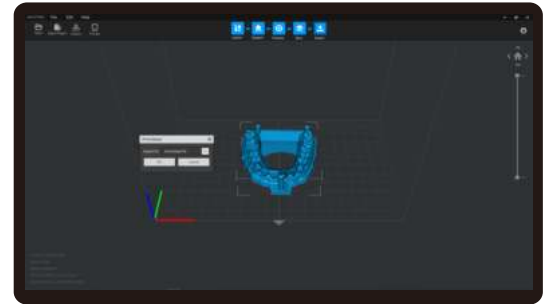
1. Open the slicer software of LCD 3D printer, click “open” on the left of the screen and add model file.



2. If the model needs to add support, click the upper left icon to set corresponding parameters.

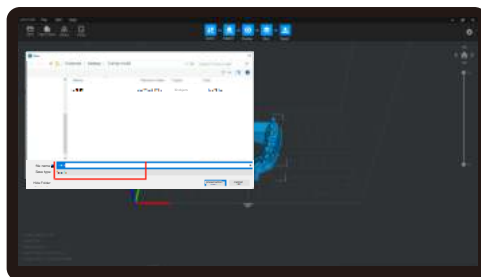


3. Click icon ①→Setting slice printing parameters②→Click “Slice”

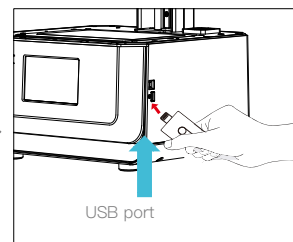


4. waiting for slice to be finished→save the sliced file  
You are welcome to find more details of slicing tutorial on the official website [www.creality.com](http://www.creality.com)).

### 2. Print



1. Generate cxdlp file, and save the file to U disk.

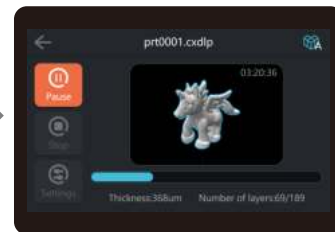
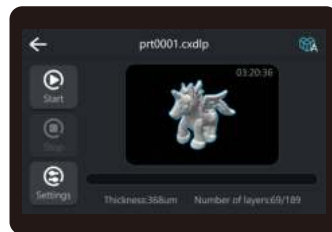
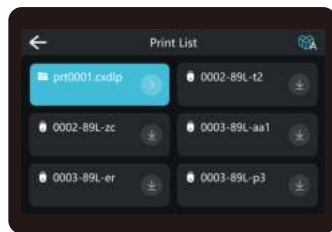
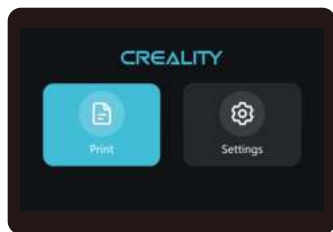


2. Insert the U disk → press the print button.



Warning: During the printing process, the machine can not be shaken, so as not to affect the printing quality.

## 8. Start Printing



1. Select files;

2. Select the file to be printed and press "Start";

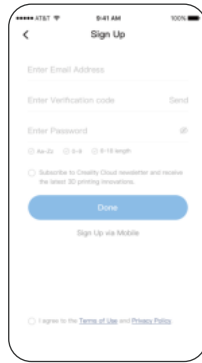
3. Printing...



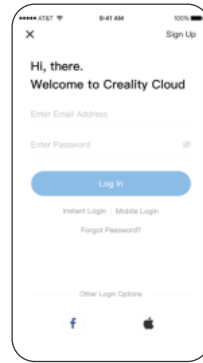
## 9. Control remote printing



1. Download



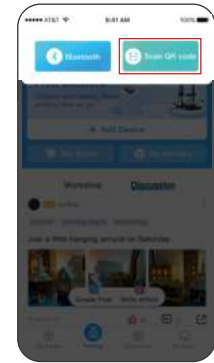
2. Register



3. Log in



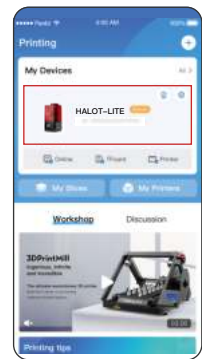
4. Add equipment



5. Scan QR Code



6. Device naming



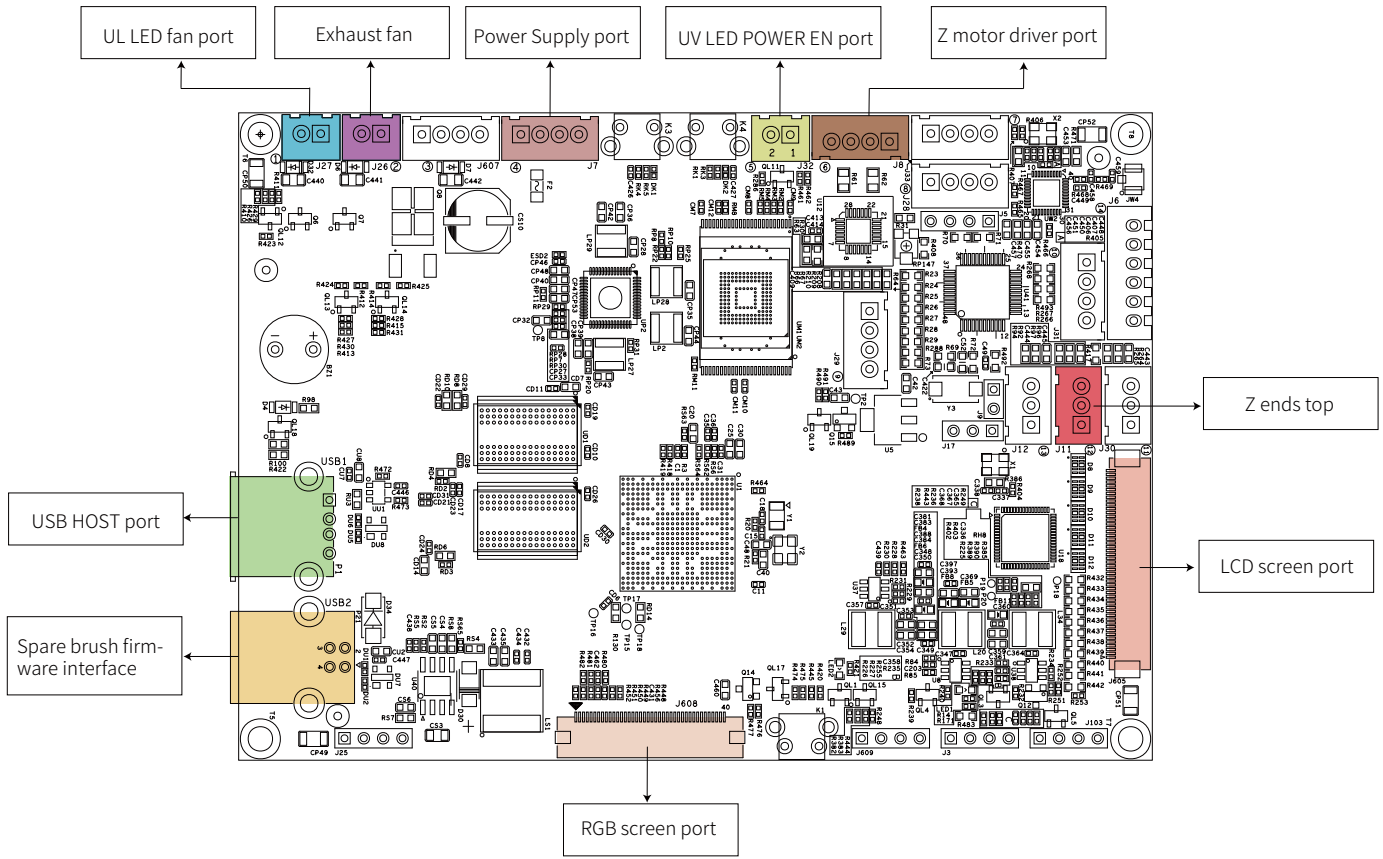
7. Select device

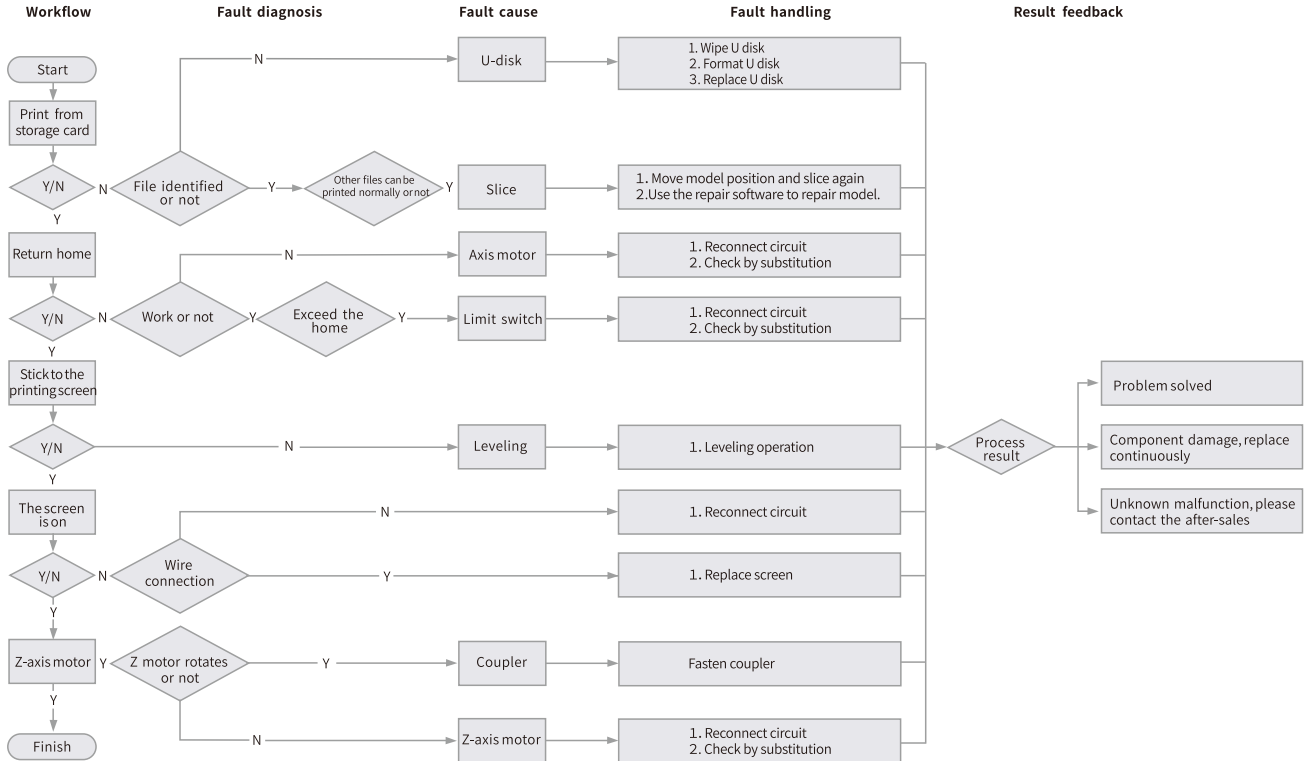


8. check printing status



9. Print Progress







### **FCC Caution:**

Any Changes or modifications not expressly approved by the party responsible for compliance could void the user's authority to operate the equipment.

This device complies with part 15 of the FCC Rules. Operation is subject to the following two conditions: (1) This device may not cause harmful interference, and (2) this device must accept any interference received, including interference that may cause undesired operation.

### **IMPORTANT NOTE:**

Note: This equipment has been tested and found to comply with the limits for a Class B digital device, pursuant to part 15 of the FCC Rules. These limits are designed to provide reasonable protection against harmful interference in a residential installation. This equipment generates, uses and can radiate radio frequency energy and, if not installed and used in accordance with the instructions, may cause harmful interference to radio communications. However, there is no guarantee that interference will not occur in a particular installation. If this equipment does cause harmful interference to radio or television reception, which can be determined by turning the equipment off and on, the user is encouraged to try to correct the interference by one or more of the following measures:

- Reorient or relocate the receiving antenna.
- Increase the separation between the equipment and receiver.
- Connect the equipment into an outlet on a circuit different from that to which the receiver is connected.
- Consult the dealer or an experienced radio/TV technician for help.

### **FCC Radiation Exposure Statement:**

This equipment complies with FCC radiation exposure limits set forth for an uncontrolled environment.

This equipment should be installed and operated with minimum distance 20cm between the radiator& your body.

This device complies with Industry Canada's licence-exempt RSSs. Operation is subject to the following two conditions:

- (1) This device may not cause interference; and
- (2) This device must accept any interference, including interference that may cause undesired operation of the device.

To maintain compliance with RF exposure guidelines, this equipment should be installed and operated with a minimum distance of 20cm between the radiator and your body.

Le présent appareil est conforme aux CNR d'Industrie Canada applicables aux appareils radio exempts de licence.

L'exploitation est autorisée aux deux conditions suivantes:

- (1) l'appareil ne doit pas produire de brouillage, et
- (2) l'utilisateur de l'appareil doit accepter tout brouillage radioélectrique subi, même si le brouillage est susceptible d'en compromettre le fonctionnement.

Pour maintenir la conformité aux directives d'exposition aux radiofréquences, cet équipement doit être installé et utilisé avec une distance minimale de 20 cm entre le radiateur et votre corps.

Due to the differences between different machine models, the physical objects and the final images can differ. The final explanation rights shall be reserved by Shenzhen Creality 3D Technology Co., Ltd.



**SHENZHEN CREALITY 3D TECHNOLOGY CO., LTD.**

Add: 18F, JinXiuHongDu Building, Meilong Blvd., Longhua Dist.,

Shenzhen, China 518131

Official Website: [www.creality.com](http://www.creality.com)

Tel: +86 755-8523 4565

E-mail: [info@creality.com](mailto:info@creality.com) [cs@creality.com](mailto:cs@creality.com)



R 210-167519