

When to replace (n)FEP?

The FEP film is the multi-layer transparent foil installed on the resin vat, allowing UV light to pass through it, curing liquid resin during the printing process.

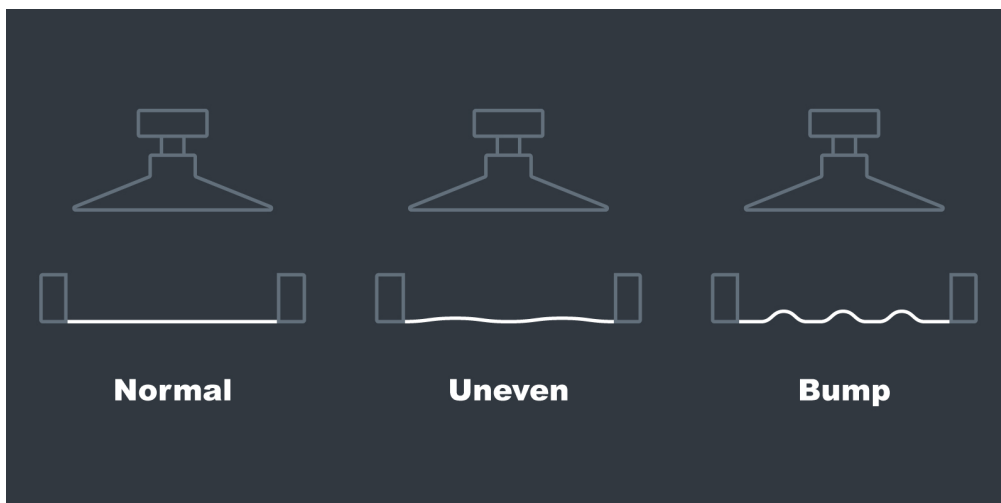
If your printer starts to produce low-quality 3D models, or you notice severe dents, scratches, deformation on the FEP film, or there is an increase in printing failure rates, it may be time to replace your FEP or PFA (nFEP) film.

There are a few conditions that indicate that the FEP or PFA (nFEP) film requires replacing, these signs include:

- Severe dents, bumps, and scratches
- Too cloudy
- Loss of tension
- Pierced

Tip:

Pour some alcohol in the resin vat, then place a paper towel underneath the vat. If wet spots appear on the paper towel, this means that there are holes in the FEP or PFA (nFEP) film.

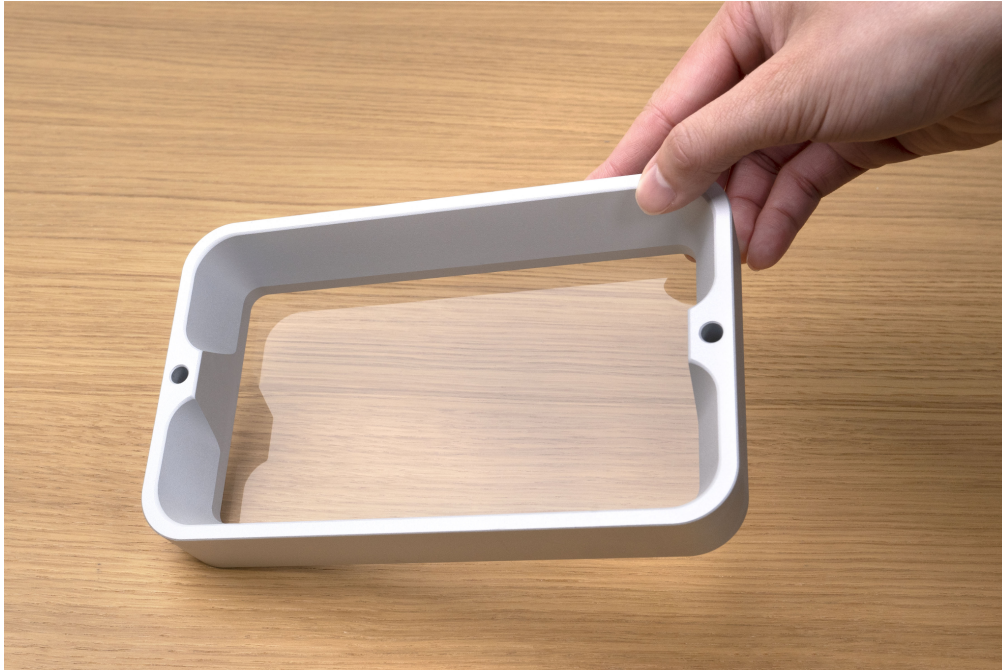


Inspecting the FEP Film

When inspecting the FEP or PFA (nFEP) film, we suggest holding it against the light to check for defects. If the FEP or PFA (nFEP) film has minor scratches or slight loss of tension, it may still seem functional. You can perform a test print and check to see if it produces any errors while printing.

Tip:

Try increasing the lift height by 1 mm when encountering a slight loss of tension.



Normal FEP Film vs. Damaged FEP Film

A Normal FEP or PFA (nFEP) film should produce prints with a smooth surface while a damaged FEP or PFA (nFEP) film's prints will have scratches across its surface.

