



# DentalScan

— Quick User Guide

## Model:DS-MIX

For more installation information, please refer to the installation instructions in the USB flash drive.

### Technical Specification

Model	AutoScan-DS-MIX
3D Scanning area	100*100*75 mm
3D Scanning principle	Structured light 3D scanning
Accuracy	≤ 7 micron (ISO)
Scanning speed	Bite 6s; Upper/Lower Jaw 13s;1- 4 dies 18s; 5-8 dies 33s;Impression 32s;
Camera resolution	5.0MP
Weight	7.5KG
Working temperature	10°C ~ 30°C
Power	DC24V
Output data format	STL/OBJ/PLY
O/S	Windows 10,64bits
Light source	Blue light

### Environment Requirements:

- Scanner laying flat
- Work temperature:10°C-30°C
- Keep the scan cabin away from bright light
- Set the scanner steady without vibration

### PC model recommendation

-XPS8930,or above

### PC model recommendation

- System win10 (64 bits only)
- USB ports: scanner needs one USB 3.0 port; scanner dongle needs one USB port with no preference
- Display card: independent display card, Nvidia GTX1060 (6G Ram) better
- CPU: Intel Core™ i7 or better
- Memory 16G or better
- shut down firewall

### Scan Software Installation

1. Software package extraction  
-Insert the USB flash disk and copy the software package and user manual from the USB flash disk, save it on your own PC
2. Connect the scanner to PC and turn on scanner
3. Run the software package  
-double click "Setup.exe", install the software step by step with instructions  
-Basic installation process requires clicking "Next" or "Complete" only please operate as follows under certain situations

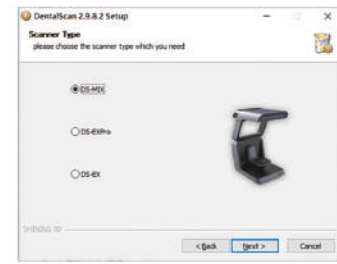


Fig.1 Select the corresponding model

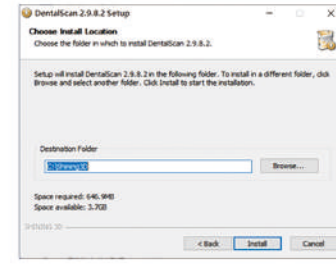


Fig.2 Select the installation path



Fig.3 Installation complete

If Exocad has already been installed, then choose "Launch activator ExoCad right now" and continue to finish the following process; otherwise, cancel the selection and click "finish" directly

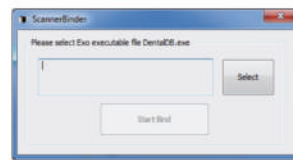


Fig.4 Click "select"

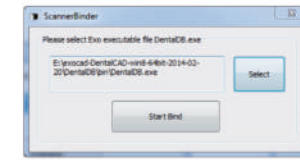


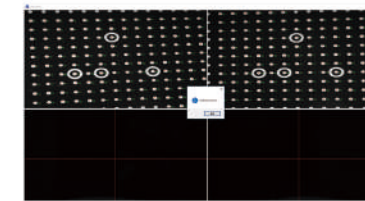
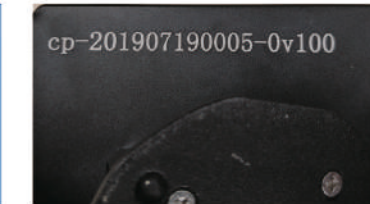
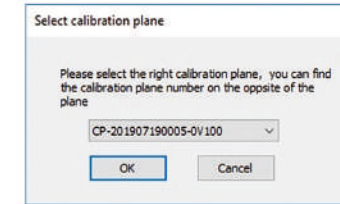
Fig.5 Search the "DentalDB.exe" path, click "start bind", close it

### Scanner Calibration

- Run the software "DentalManager.exe"
- Put the calibration plate on the turntable, set it steady (Note: Do not touch the front dotted surface of the board during operation to avoid)
- Click "Calibration" button on the top menu to enter calibration process



- Check the calibration serial number in the software, make sure that this serial number matches the one at the back of the calibration board. Start the calibration after it's confirmed



"Calibrate success" window pops up after the installation is successful. If "Calibrate success" does not pop up, please contact our technician for help.

## Technical support

Shining 3D Tech Co., Ltd.

☎ 0571-82999510

☎ 0571-82999050

🌐 www.shining3ddental.com

✉ dental\_support@shining3d.com

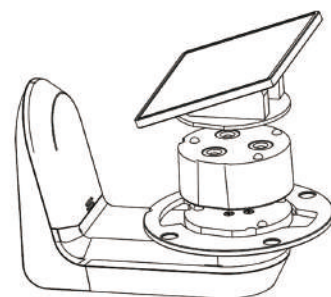
### Accessories List

Items	Quantity	Picture	Usage
Power adapter	1		To supply 24V electric power
Data cable	1		For connecting computer with USB 3.0 port
Lens cleaning cloth	1		For cleaning the lens and mirror
Allen key	1		For maintenance
Flash disk	1		For storing software and documents
Blu-Tack	2		For fixing the dies in the holes
Dongle	1		For running scan software
Basic height adapter	1		Base for fixture/plate/tray. Placed on the rotation table
Calibrate plate	1		For calibration. Don't touch the surface
Model Fixture	2		For plaster model scanning
Full arch tray	1		Fix the full arch on the tray by rubber band
Arch tray	1		Fix the arch on the tray with Blu-Tack
Die plate	1		Fill holes with Blu-Tack, then insert dies for die scanning
Articulator base	1		For dynamic articulator scanning
Articulation transfer plate 1	1		For scanning the plaster model taken from the articulator (Artex, kavo)
Articulation transfer plate 2	1		For scanning the plaster model taken from the articulator (Corident)
Articulation transfer plate 3	1		For scanning the plaster model taken from the articulator (Bloart, SAM)
All-in-one plate	1		For all-in-one(dies and quarter models)scanning
All-in-one fixture base	1		For placing upper jaw and lower jaw together
Impression Fixture (optional)	1		For impression scanning

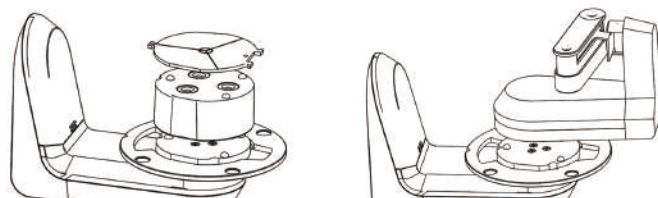
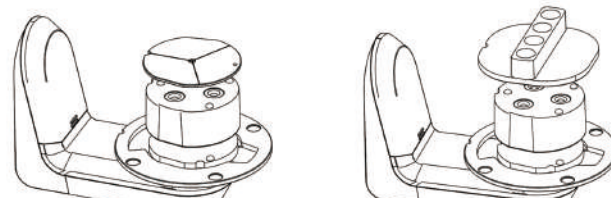
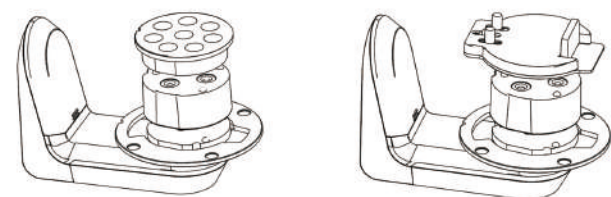
### The Use Of Fixture

#### 1. Basic height adapter

For calibration



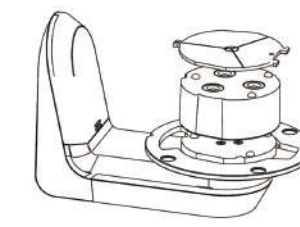
For die scanning/plaster model scanning/impression scanning



#### 2. Full arch tray

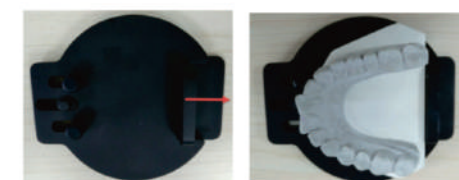


The clamping method of full arch tray

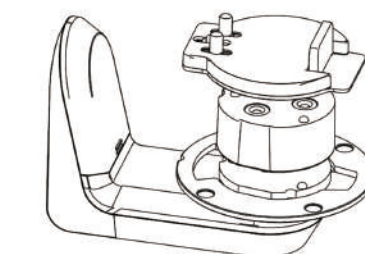


The placement method of full arch tray

#### 3. Model fixture

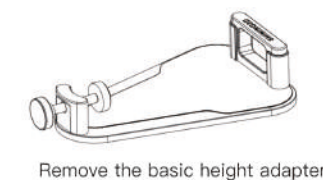


The clamping method of model fixture

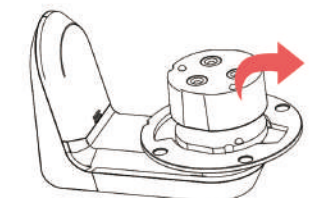


The placement method of model fixture

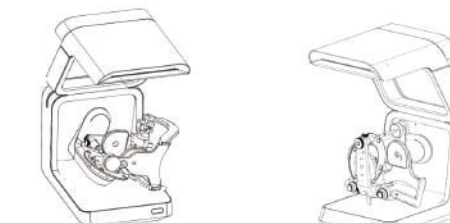
#### 4. Articulator height adapter



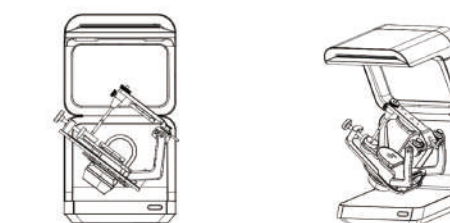
Remove the basic height adapter



The placement method of articulator height adapter

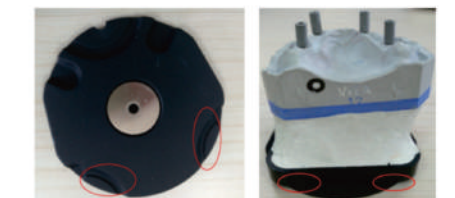


The placement method of static articulator scanning (both obverse side and the reverse side)

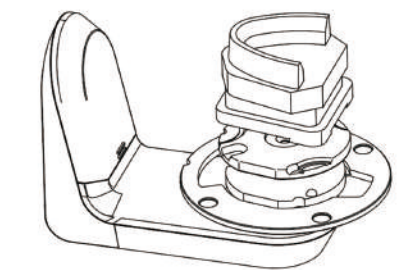


The dynamic articulator scan placement method

#### 5. Articulator transfer plate

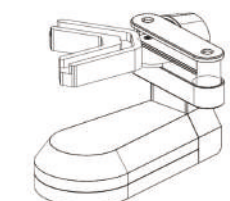


The clamping method of articulation transfer plate

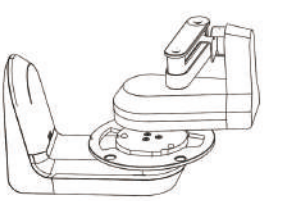


The placement method of articulation transfer plate (remove the basic height adapter)

#### 6. Impression fixture



The clamping method of impression fixture



The placement method of impression fixture