

How to replace the LCD

The LCD screen is essential in resin 3D printing. An image of each layer is generated on the LCD while an array of LED chips project light through the LCD.

As the LCD is a consumable part, it may need to be replaced after a period of time. The LCD screen is fragile so be careful during the replacement process.

SONIC MINI 8K

Removing the Old LCD

Step 1: Remove the plastic case, resin vat and building plate.

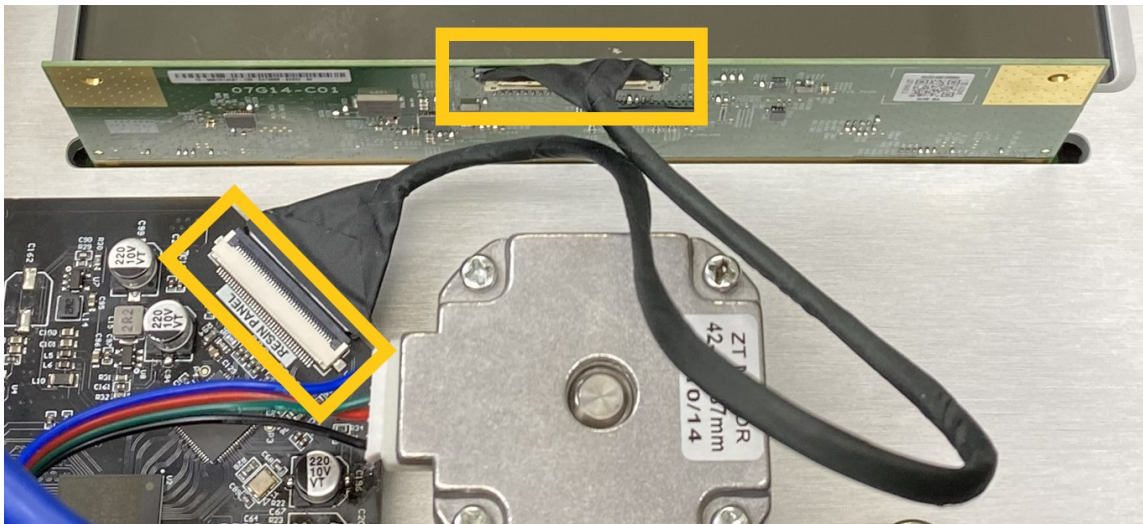
Step 2: Select TOOLS > MANUAL > 10mm until the T-plate lifts to the top.

Step 3: Important: Turn off the printer and unplug the power cable.

Step 4: Turn the printer upside down and remove the bottom cover.

Step 5: Unplug the LED module and unscrew the lens hood.

Step 6: Flip the latch and detach the LCD ribbon cable connecting to the mainboard.



Installation for new LCD

Step 1: Lay the new LCD in place and paste the electrical tape around the edge of LCD.

Step 2: Plug the LCD ribbon cable on the LCD and mainboard

Step 3: Plug the LED module and tighten the lens hood.

Step 4: Install the bottom cover back.

Step 5: Perform the built-in LCD test to ensure that the LCD works properly.

SONIC MINI/ SONIC MINI 4K/ SONIC MIGHTY 4K

Removing the Old LCD

Step 1: Remove the plastic covering.

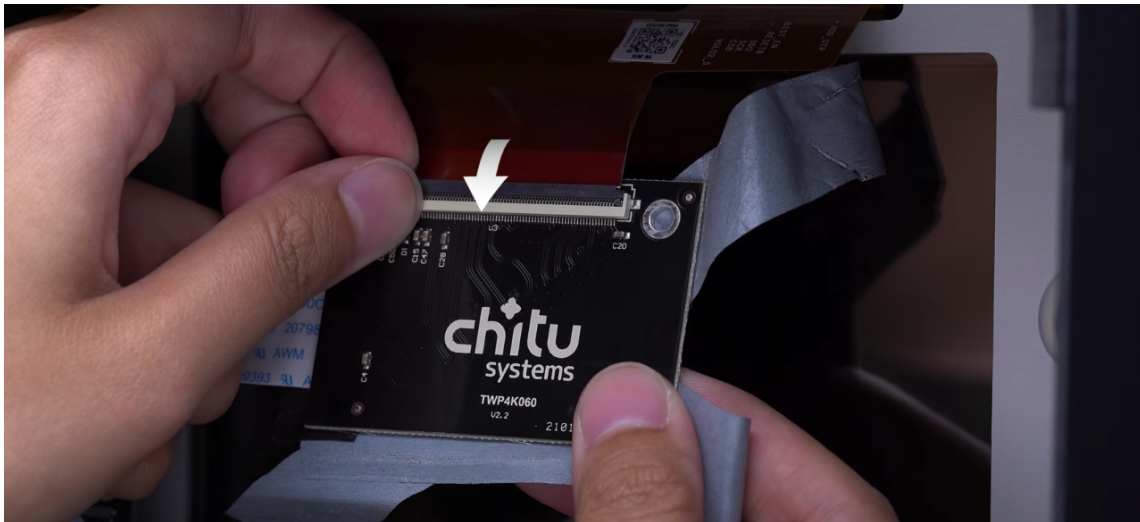
Step 2: Remove the resin vat and the building plate.

Step 3: Make sure the building plate on the Z-axis is lifted completely. If it isn't, click TOOLS, and then click MANUAL, click on 10mm several times.

Step 4: Important, turn off the 3D printer and unplug the power cable.

Step 5: Flip the 3D printer and remove the bottom with an m3 Allen wrench which is included in the toolbox.

Step 6: Loosen the LCD ribbon cable connecting to the LCD control board (in brown). Make sure to flip up the latch before removing the cable.



Step 7: Turn the 3D printer upright. Remove the black electric tape placed around the LCD. Then, remove the LCD. Use a blade for assistance, if necessary.

Placing the New LCD

Step 1: Place the new LCD in place and tape down all four sides with electric tape.

Step 2: Flip the 3D printer and attach the LCD's ribbon cable onto the mainboard.

Step 3: Place the bottom back onto the 3D printer and tighten the screws.

Step 4: Turn the 3D printer upright. Plug in the power cable, and turn on the 3D printer.

Step 5: Perform the LCD test to ensure that the LCD is functioning properly.

Note:

1. We suggest using black electricity tape, as it is water-proof, heat resistant, and doesn't conduct electricity.
2. Turn off the 3D printer and unplug the power cable before changing the LCD.

SONIC MEGA/ SONIC SERIES/ SHUFFLE SERIES/ MAKE

Removing the Front Case

Step 1: Remove the resin vat.

Step 2: Make sure the building plate on the Z-axis is retracted completely. If it isn't, click TOOLS, and then click MANUAL, click on 10mm several times.

Step 3: Important: Turn off the 3D printer and unplug the power cable.

Step 4: Open the lower-front part of the printer.

Step 5: Unplug the cables which are attached to the front part, then remove the front case.



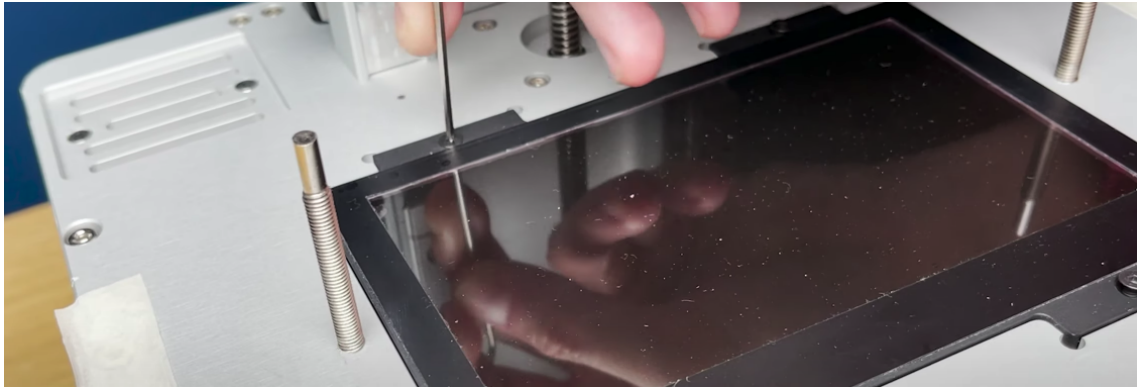
Removing the Old LCD

Step 1: Loosen the LCD ribbon cable connecting to the LCD control board (in brown). Make sure to flip up the latch before removing the cable.

Step 2: Remove the black electric tape placed around the LCD.

Step 3: Remove the four screws on the LCD (if there are any). Then remove the LCD. Use a blade for assistance, if necessary.





Placing the New LCD

Step 1: Place the new LCD in place and ensure it is aligned correctly, then tape down all four sides with electric tape.

Step 2: Attach the LCD's ribbon cable onto the control board.

Step 3: Plug in the cables back to the control board, and then place the screen frame back to the 3D printer.

Step 4: Screw the bolts back onto the 3D printer.

Step 5: Plug in the power cable, and turn on the 3D printer.

Step 6: Perform an LCD test to ensure that the LCD is functioning properly.

Note:

1. We suggest using black electricity tape, as it is water-proof, heat resistant, and doesn't conduct electricity.
2. Turn off the 3D printer and unplug the power cable before changing the LCD.

TRANSFORM

Step 1: Remove the resin vat.

Step 2: Make sure the building plate on the Z-axis has retracted completely. If it hasn't, click TOOLS, and then click MANUAL, click several times on 10mm.

Step 3: Turn off the 3D printer and unplug the power cable.

Step 4: Remove all four bolts on the four corners of the LCD.

Step 5: Unplug the cables and the ribbon cable, which is attached to the control **board**.

Step 6: Remove the black electric tape placed around the LCD. Then remove the LCD. Use a blade for assistance, if necessary.

Step 7: Place the new LCD in place and ensure it is aligned correctly, then tape down all four sides with electric tape.

Step 8: Attach the LCD's ribbon cable onto the control board.

Step 9: Plug in the cables back to the control board, and place the LCD frame back onto the 3D printer.

Step 10: Screw the bolts back onto the 3D printer.

Step 11: Plug in the power cable, and turn on the printer.

Step 12: Perform an LCD test to ensure that the LCD is functioning properly.

Note:

1. We suggest using black electricity tape, as it is water-proof, heat resistant, and doesn't conduct electricity.
2. Turn off the 3D printer and unplug the power cable before changing the LCD.